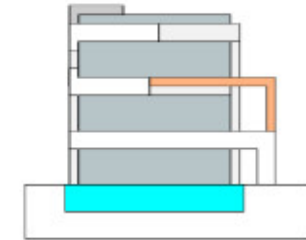
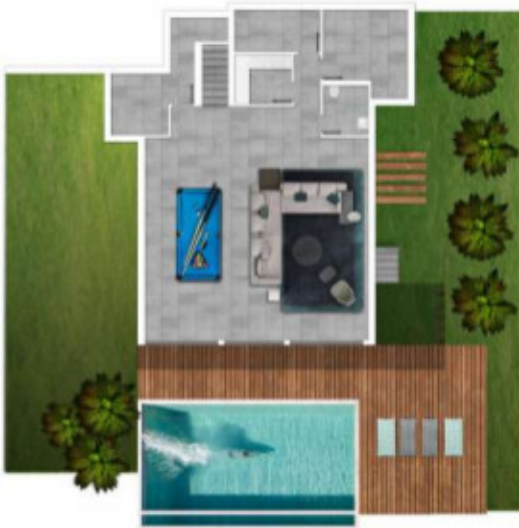


Villa Type A

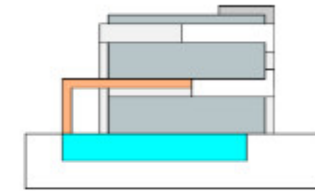


Terraces	116,79 m2
First floor	75,90 m2
Ground floor	105,07 m2
Basement	126,57 m2
Total built area	424,33 m2



ELYSIUM
LA CALA RESORT

Villa Type B



Terraces 105,45 m²

First floor 75,90 m²

Ground floor 105,07 m²

Basement 105,35 m²

Total built area 391,77 m²



ELYSIUM
LA CALA RESORT