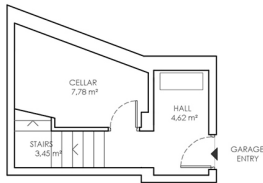
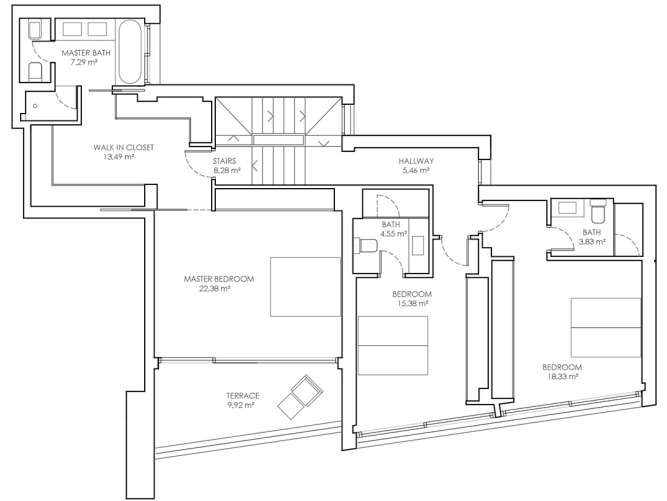
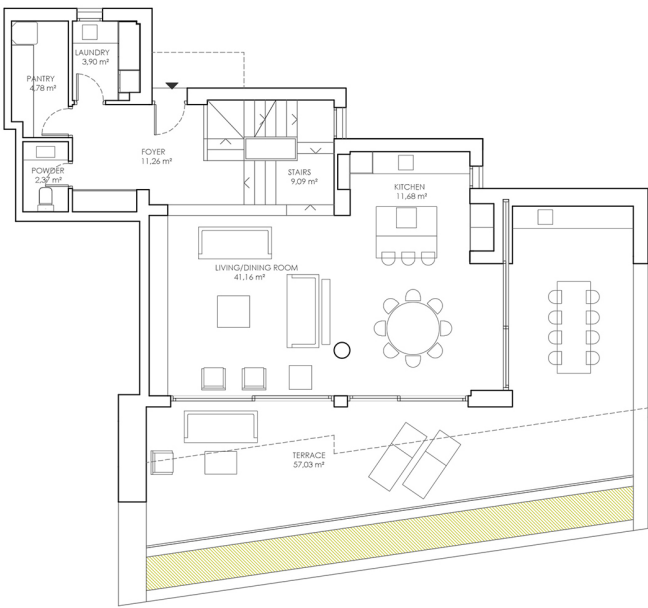


GRANDVIEW MARBELLA

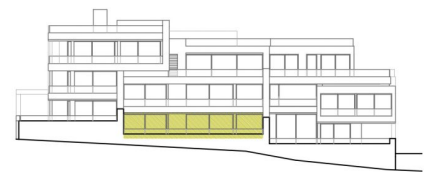
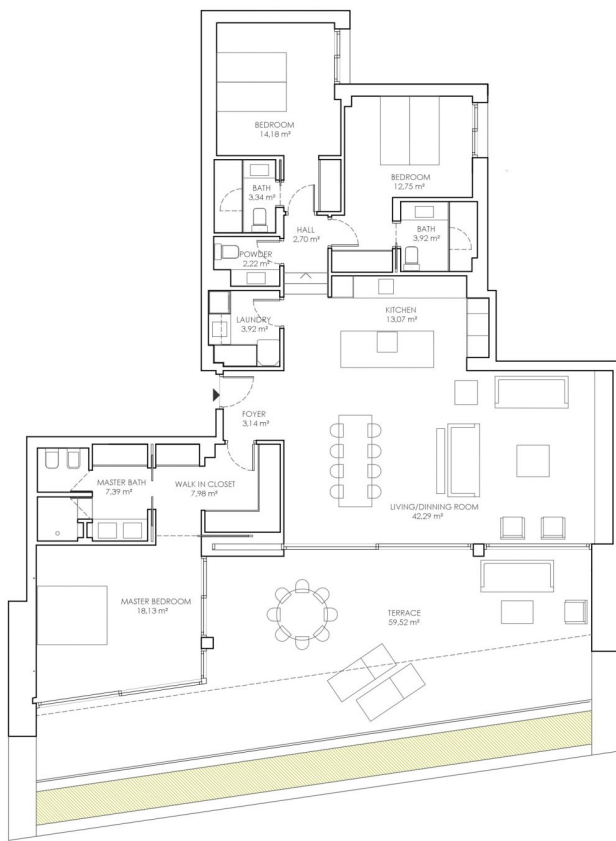


APARTMENT 1 (DUPLEX)
TOTAL BUILT AREA: 359,79 m²
(INCLUDING TERRACES AND P.P. OF COMMUNAL AREAS)

GRAPHIC SCALE: 0.0 m 1.0 2.0 5.0



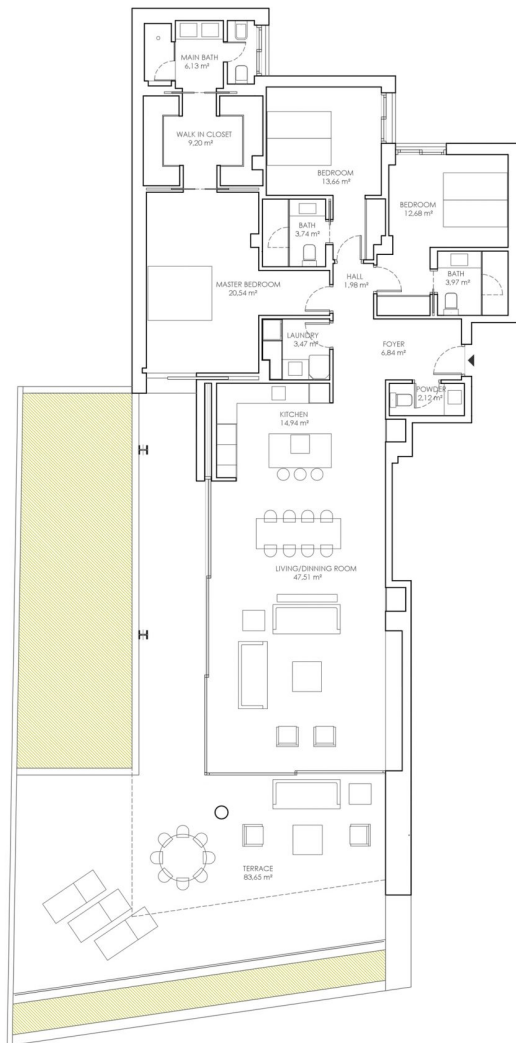
GRANDVIEW MARBELLA



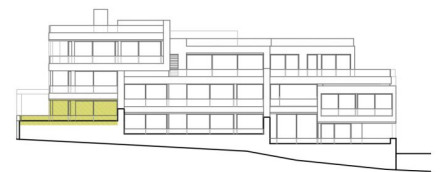
APARTMENT 2
TOTAL BUILT AREA: 257.08 m²
(INCLUDING TERRACES AND P.P. OF COMMUNAL AREAS)

GRAPHIC SCALE: 0.0m 0.5 1.0 2.0 5.0





GRANDVIEW MARBELLA



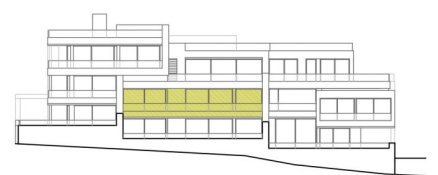
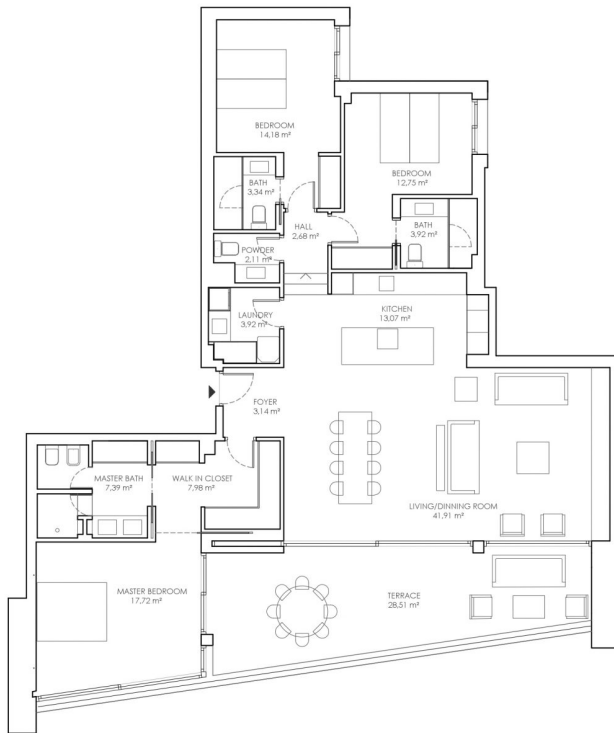
APARTMENT 3
 TOTAL BUILT AREA: 311,15 m²
 (INCLUDING TERRACES AND P.P. OF COMMUNAL AREAS)

GRAPHIC SCALE: 0.0 m 0.5 1.0 2.0 3.0



GRANDVIEW

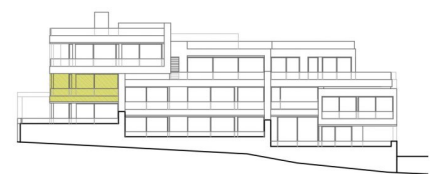
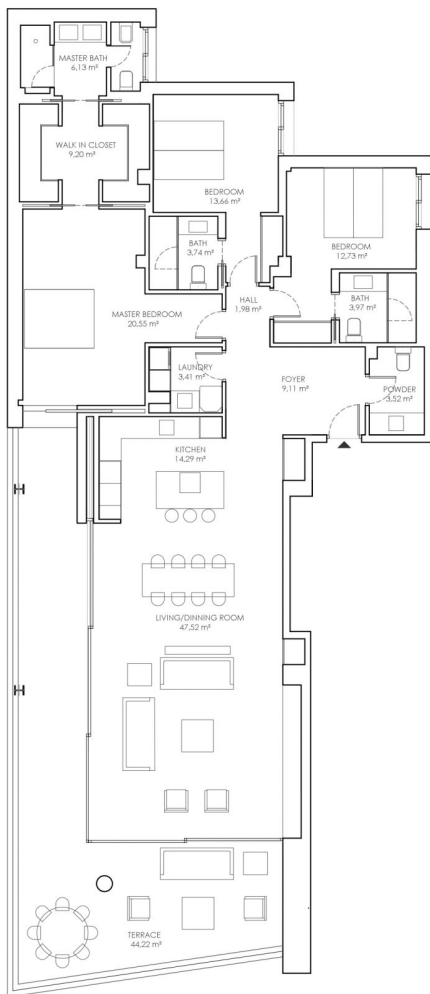
MARBELLA



APARTMENT 4
TOTAL BUILT AREA: 204.48 m²
(INCLUDING TERRACES AND P.P. OF COMMUNAL AREAS)



GRANDVIEW MARBELLA



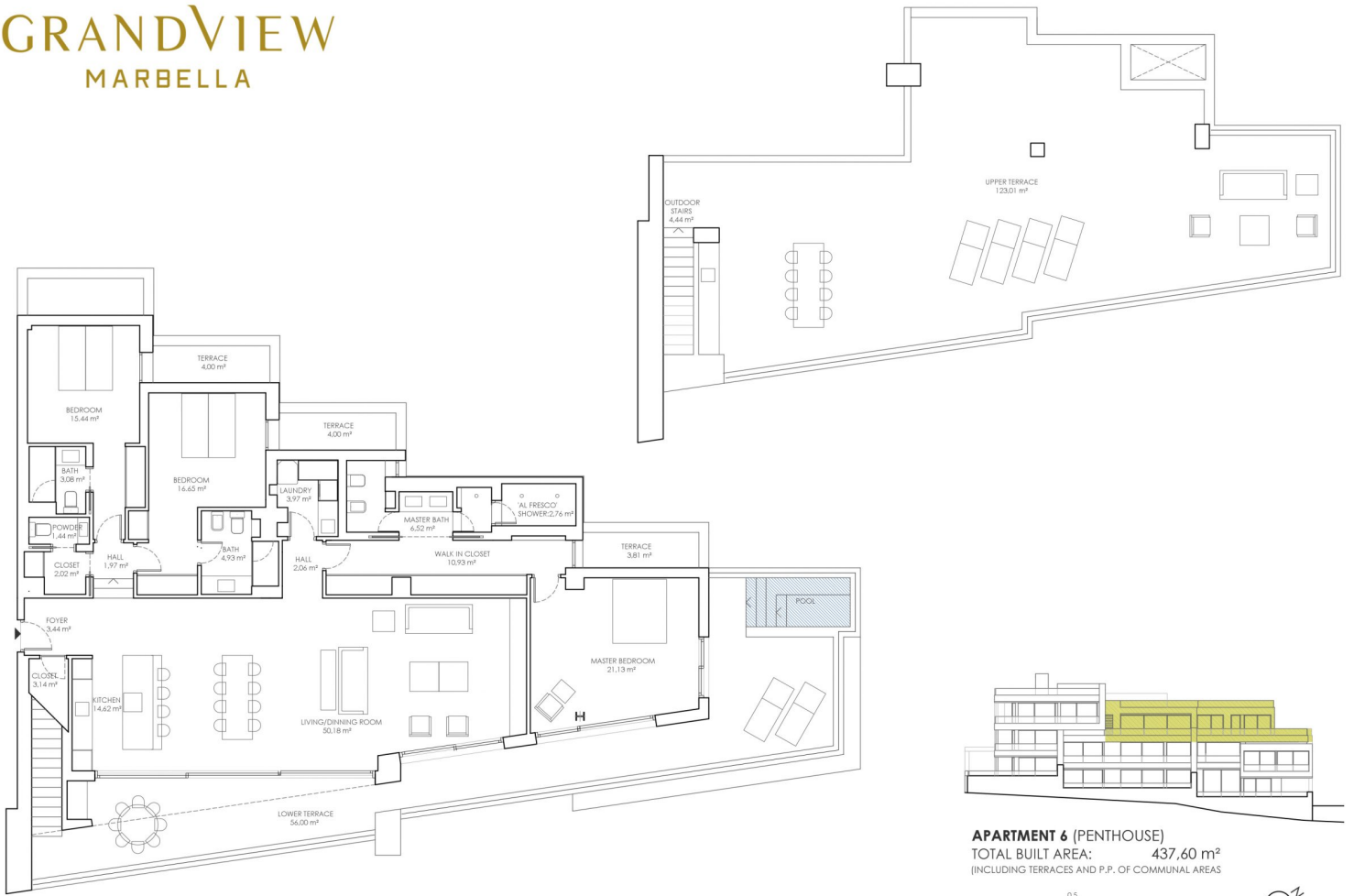
APARTMENT 5
TOTAL BUILT AREA: 244,96 m²
(INCLUDING TERRACES AND P.P. OF COMMUNAL AREAS)

GRAPHIC SCALE: 0.5 1.0 2.0 3.0



GRANDVIEW

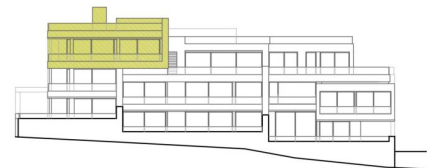
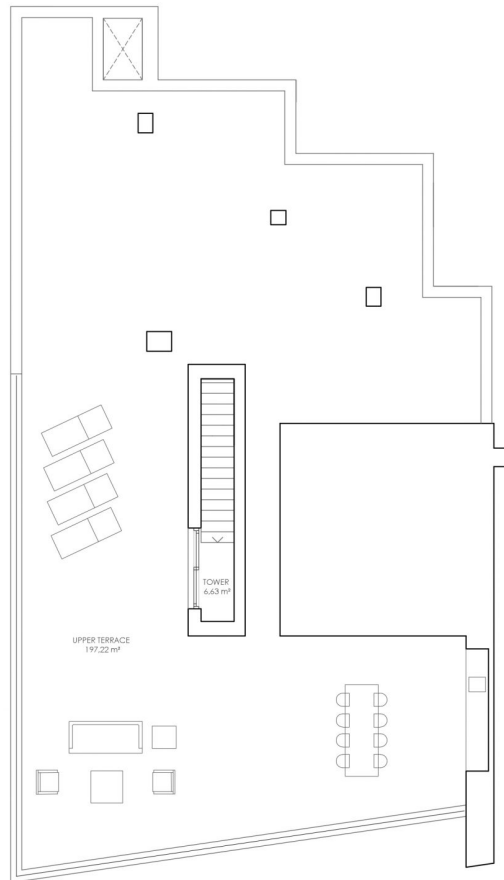
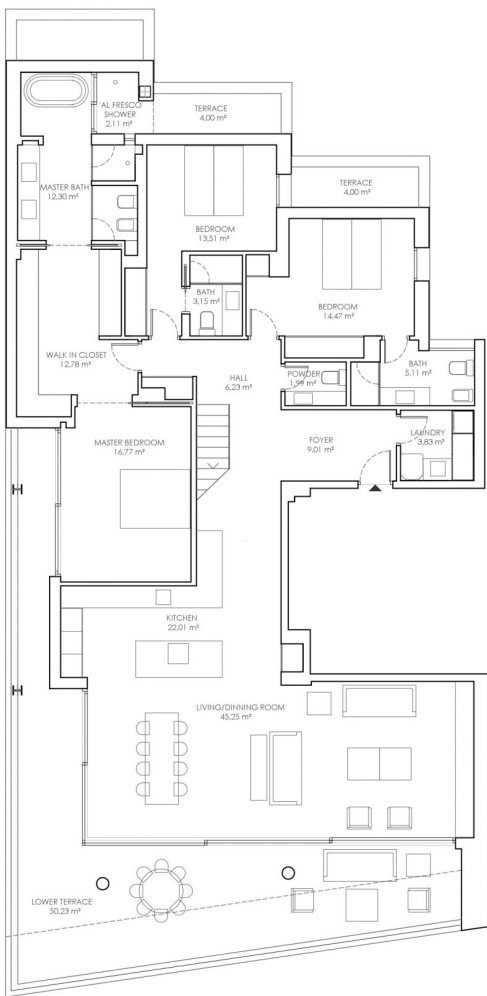
MARBELLA



APARTMENT 6 (PENTHOUSE)
 TOTAL BUILT AREA: 437,60 m²
 (INCLUDING TERRACES AND P.P. OF COMMUNAL AREAS)



GRANDVIEW MARBELLA



APARTMENT 7 (PENTHOUSE)
 TOTAL BUILT AREA: 515.53 m²
 (INCLUDING TERRACES AND P.P. OF COMMUNAL AREAS)

