

LOMAS DEL REY



INDEX

1. The JAMSA Group
2. The Lomas del Rey Complex
3. The Apartments
4. The Qualities
5. The Interior Design
6. The Partners

1. The JAMSA Group

A guarantee of quality and professionalism



The Jamsa Group, founded in the 1970s by Juan Antonio Mora, has long-term investments in major residential buildings and is active in property development with representative offices in Madrid, Santander, Cordoba and Marbella.

The Group distinguishes itself from its peers by putting emphasis on high quality constructions and materials tailor made to consumer expectations. Jamsa offers quality of materials, and efficiency of services, for customer satisfaction.

Strong emphasis on quality, safety, sustainability and services to the customers is what drives the Jamsa Group.

Jamsa has developments throughout Spain in Asturias, Cadiz, Lucena, Cordoba, Las Palmas de Gran Canaria, Tenerife, Lanzarote, Madrid, Malaga, Palma de Mallorca, Santander, Cantabria, Sevilla, Marbella .

The group is also present internationally in Miami, Santo Domingo and Bucarest.

The Jamsa Group

Beyond Construction, A Vision



Jamsa's large experience and an innovative vision, has allowed The Group to maintain ourselves in the market and consolidate its position as a group which has been able to overcome any difficulty, keeping ourselves strong, constant and solvent.

Jamsa has confirmed in the different periods that they went through, that the Group is more than a builder and developer, they are a team of people that work for people.

The trajectory of success of the Group is based on an efficient organization and a dynamic and self-driven management, implemented through different a consolidation of the initial family business and its growth into a solid international entity, committed to maximize efficiency and customer satisfaction.



LOMAS DEL REY

Your Home to enjoy



Exceptionally located in the famous Marbella Golden Mile, the Complex of Lomas del Rey is a luxury community of buildings with more than 25.000m² of extraordinary gardens, beautiful sea views, 4 swimming pools, a social club, 24 hours security, and an extensive maintenance program offering even Laundry, and cleaning services for the owners/tenants.



Lomas del Rey Marbella, more than a location: a lifestyle

The complex is located in a privileged area, in front of the restaurant La Meridiana. In the center of the Golden Mile, with a direct access from the freeway around Marbella (exit 181B of the A7, Nagueles), near the Puente Romano Hotel.



LOMAS LUXURY COMPLEX

Situated at only 900 metres from the beach, and 3 minutes from the world famous Puerto Banus, and 5 minutes from Marbella center, and within 10 minutes of 8 different Golf Clubs. The complex is also within minutes of a school bus stop, with connections to all the schools and colleges in Marbella and beyond. Its direct access to the freeway, leaves Lomas del Rey at only 40 minutes from the Malaga airport and the rest of world. This makes Lomas del Rey a prime location to live, enjoy, and relax.



PANORAMIC MARBELLA VIEW







Astounding swimming pools



SWIMMING POOL AREA

Lomas del Rey

A paradise with unparalleled amenities

From your everyday essentials to your own putting green, Lomas del Rey on-site pleasures are truly unparalleled.

Quality living for all residents staying in smaller apartments to larger luxury penthouses.

The Residents are in an extremely privileged location. We felt that it was our duty to create a sophisticated, contemporary and thoughtful addition that would enhance this picturesque neighborhood.



PUERTO BANUS VIEW



enjoy your lifestyle with
friends in outdoors



neighbourhood that keeps you connected to the entire city



Fine dining



Numerous Golf courses in close surroundings



Social Life

Harbor

Gastronomy

Golf

Mountain

Beach

Social Life



Harbor Puerto Banus and Puerto Deportivo Marbella



Mountain La Concha



Vast beaches









Lomas del Rey Offers 3 types of layout:

Apartment 2Br + 2Ba



1. Living Room
2. Dining Area
3. Open Kitchen
4. Guest Washroom
5. Guest Bedroom
6. Master Bedroom and Bathroom
7. Walk-in Closet
8. Terrace
9. Jacuzzi

The specifications stated above are abbreviated. The Developer will provide intending purchasers with the relevant particulars, documents and information (including but not limited to the more detailed specifications of the relevant unit) in accordance with the requirements of Form 3 of the Housing Developers Rules.



Apartment 3Br + 3Ba



1. Living Room
2. Dining Area
3. Open Kitchen
4. Guest Washroom
5. Guest Bedroom
6. Guest Bedroom
7. Master Bedroom and Bathroom
8. Walk-in Closet
9. Terrace
10. Jacuzzi

The specifications stated above are abbreviated. The Developer will provide intending purchasers with the relevant particulars, documents and information (including but not limited to the more detailed specifications of the relevant unit) in accordance with the requirements of Form 3 of the Housing Developers Rules.

Duplex ground floor 1Br + 1Ba

Planta Baja



- 1. Living Room
- 2. Dining Area
- 3. Open Kitchen
- 4. Guest Bedroom
- 5. Guest Washroom
- 6. Terrace

Planta Primera



- 7. Swimming Pool
- 8. Master Bedroom and Bathroom
- 9. Walk-in Closet
- 10. Bedroom and Bathroom
- 11. Walk-in Closet

The specifications stated above are abbreviated. The Developer will provide intending purchasers with the relevant particulars, documents and information (including but not limited to the more detailed specifications of the relevant unit) in accordance with the requirements of Form 3 of the Housing Developers Rules ("PDI") and intending purchasers should therefore refer to such PDI, before paying the booking fee for a unit.



Finishes & Qualities

Security door with connection to app

High quality bespoke fitted wardrobes, kitchen and doors

Wood Floor in bedrooms

High quality ceramics in bathrooms and day area floors

High quality windows and outdoor shutters

Built-in AC units



The Bathrooms

Spacious bathrooms with daylight, high quality ceramics



The Doors

High security doors with app

The Windows

High quality triple glazed windows with opening assistance

The Floors

High quality ceramics in day areas and wooden floors in bedrooms



Kitchen

From Gunni Trentino with Gaggenau electrodomestics

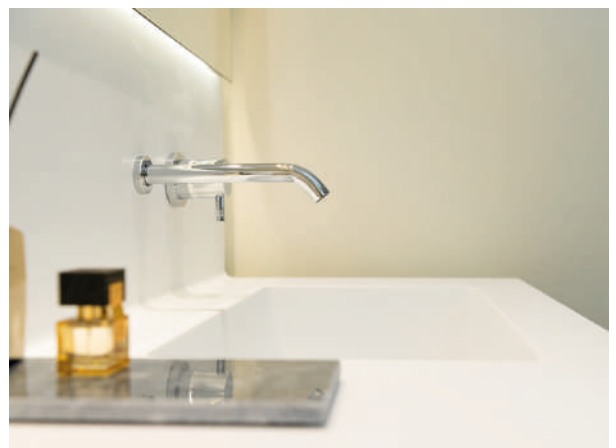
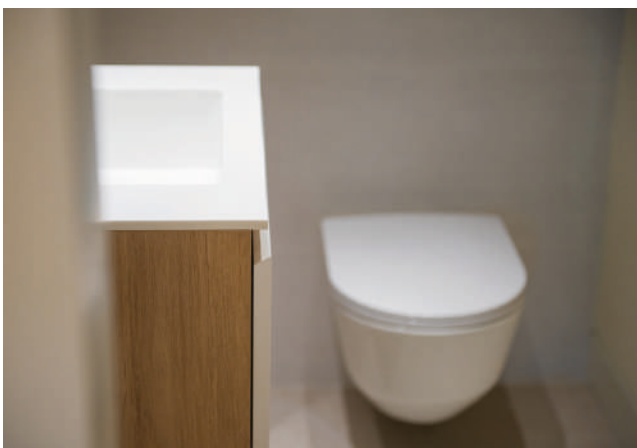


Bathrooms

Suspended furniture

Backlit mirrors with LED stripes High quality ceramics in natural tones

Day light through windows / entrance to terraces



Doors & Windows



Describe the door and windows....



Audio and Video Illusion Pack



TV Sony Bravia
4K 65"
Living room

TV Sony Bravia
4K 49"
Main Bedroom

Imagine a TV that fits seamlessly into your life, enhancing every experience with a picture that's as beautiful as its design. It's all about you and your entertainment, delivering an experience that's both effortless and exciting.

Sony's 4K HDR TVs are compatible with latest HDR movies and shows. You'll see a greater range of brightness with a wider colour spectrum, and exceptional contrast, clarity and detail that goes beyond 4K.

SONOS

Sonos Playbar
Living room
Main Bedroom



Sonos Play 5
Kitchen



Sonos Move
Terrace



B&O Pro Pack



LG 65" Serie C9 LG 49" 4K
Living room Main Bedroom

The sophisticated and stylized design of the TV integrates perfectly into your home. The cables manager keeps all connections perfectly organized so that your room is tidy. Enjoy all the details, bright colors and more depth in all colors, showing details and textures of images for an incredible cinematic experience.

BANG & OLUFSEN

Playbar Beosound Stage
Living room
Main Bedroom



BeoRemote
Living room



BeoPlay M5
Kitchen
Terrace



B&O Premium Pack



Beovision
Eclipse 65"
Living room

LG 49" 4K
Main Bedroom

Bang & Olufsen

With the best sound system for televisions in the world, the Beovision Eclipse TV is designed to integrate seamlessly with your lifestyle. It mixes images so naturally that they seem almost unreal with sounds so powerful that they literally leave the screen.

LG

Offers us a wide viewing angle to enjoy the greatest of the purest and most realistic colors from any perspective. This screen have a perfect view in terms of precision and color uniformity from anywhere in your room.

BANG & OLUFSEN

Playbar Beosound Stage
Main Bedroom



BeoRemote
Living room



BeoSound 2
Kitchen



BeoPlay M5
Terrace







5. Lomas del Rey Interior Design by AALTO Exclusive Design



The JAMSA Group partnered with AALTO Exclusive Design to design the interiors of their showflats in Lomas del Rey.

AALTO EXCLUSIVE DESIGN is an international Multi-brand Design Studio, with a 800m2 design showroom in the Golden Mile, in Marbella and its manufacturing plant in Malaga.

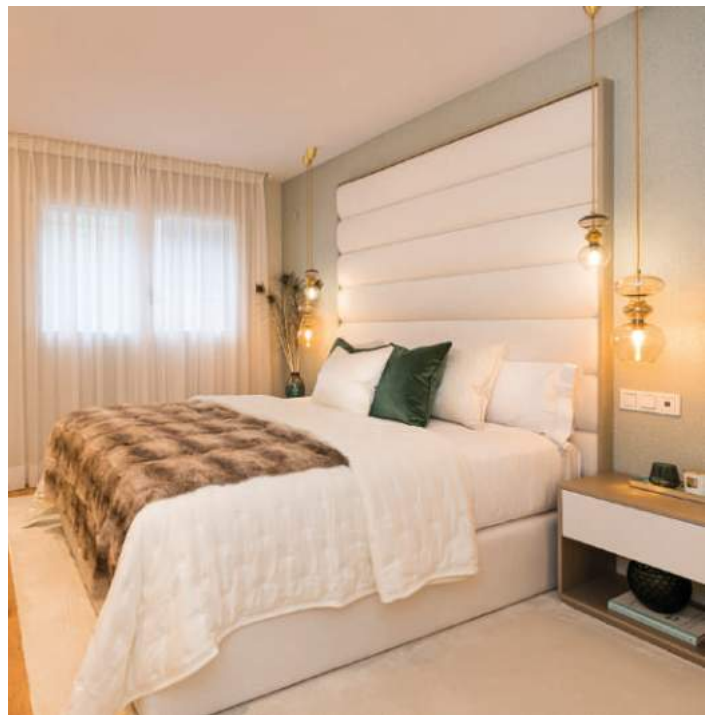
AALTO has created three level furnishing packs for LOMAS DEL REY clients at special conditions.

The design packs are all bespoke designs and are fully customisable upon agreement.

Aalto Design



Lomas del Rey Interior Design Showflat 1



by *Alto Design*



Incorporate the finest in modern Living room



The Terrace

Relax outdoor overlooking the plush gardens, La Concha view and sea views from Penthouse floors Jacuzzi

The Furniture

Bespoke high quality furnishing with luxury finishes
State of the art Bang & Olufsen TVs and sound system



LIVING ROOM

Elegantly planned open space for kitchen - living - dining area, designed with distinctive styling, bearing the stamp of a unique design concept. Every detail is a window to set the tone for a classy contemporary living.



by *Alfa Design*

Thoughtfully designed to set the tone for classy and contemporary bedroom



Light oak flooring, custom-finished built-in wardrobes and en-suite bathrooms make for a sumptuous way to begin and end each day.

Lomas Del Rey
Penthouse Showflat



by *Atto Design*





Lomas Del Rey
Penthouse Showflat



by *Atto Design*





6. THE TEAM



Estudio Castelló is specialized in architecture and urban planning projects, offering its clients a comprehensive management of their projects, with completely personalized attention that provides effective solutions with a functional and innovative design. Castelló Arquitectura considers that all projects must contemplate a high artistic qualification, but also always keeps in mind that all projects are of great importance for clients, which is why it prioritizes functional and business aspects.



Juan Antonio Mora S.A (JAMSA) family business with 50 years of experience, specialized in the construction and commercialization of large residential areas. The extensive experience we have and an innovative vision have allowed us to maintain and consolidate ourselves as a company that has managed to overcome any setback without difficulties, keeping us strong, constant and solvent. We have confirmed in the different times that we have lived, Jamsa is more than a construction company and developer of houses: we are a team of people, we work for people.



More than 40 years of history based on an efficient organization and a dynamic and entrepreneurial management, implemented through successive processes of creation of own management models based on quality, innovation, efficiency and profitability, as well as the solvency, seriousness and guarantee in the execution of its works are backed by the facts. Our Experience is great added value that exports to different geographical environments, allowing to undertake some of the most unique and complex projects in the world.



PARTNERS

PORCELANOSA®
TILE / KITCHEN / BATH / HARDWOOD

AALTO
EXCLUSIVEDESIGN

illusion
custom home automation solutions

B&
O

BANG & OLUFSEN

GAGGENAU

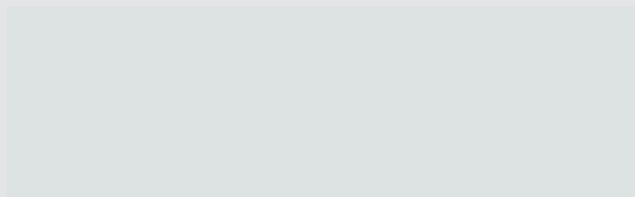
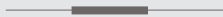

roman
Windows & Doors

[&]
oneillertre
GUNNI & TRENTINO





LOMAS DEL REY



Disclaimer: The information available in this brochure is subject to change without any notice. While every effort has been made to provide the details, particulars, contents and other graphics appearances in this brochure as updated, correct, complete and accurate, nevertheless, inadvertent errors may occur in the information. Further, our website(s) and other advertising and publicity material include artist's impressions indicating the anticipated impressions of appearance of completed development and do not constitute an offer, an invitation to offer and/or commitment of any nature between us and the recipient. The developer and its directors.