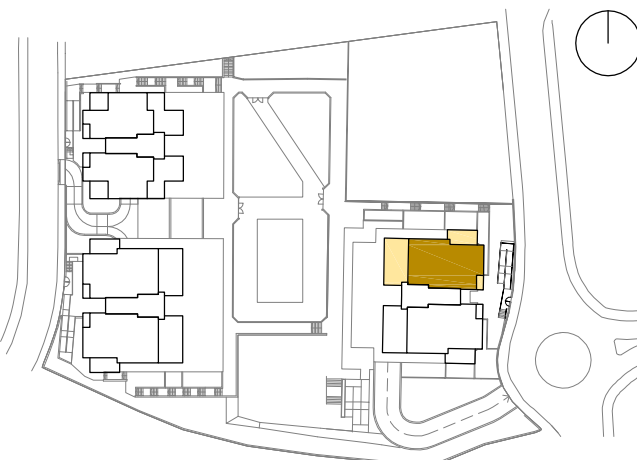


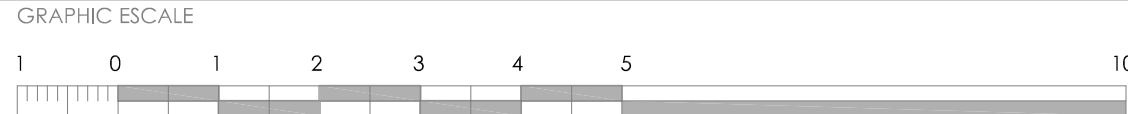


BLOCK D5. PENTHOUSE FLOOR 'RIGHT'

3R+3B	
Uncovered terrace	142,80 m²
Covered terrace	14,50 m²
Constructed area	205,52 m²



The present document has strictly informative character. It may suffer variations for technical, legal and/or urban requirements. The furniture is purely informative. All measurements are approximate.



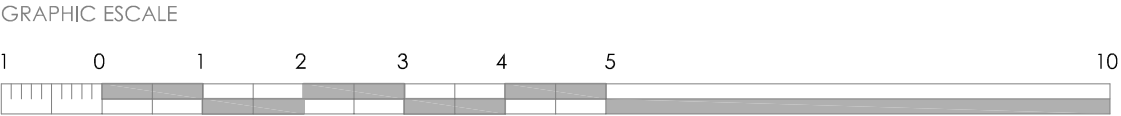


BLOCK D5. PENTHOUSE FLOOR 'RIGHT'

3R+3B	
Uncovered terrace	142,80 m²
Covered terrace	14,50 m²
Constructed area	205,52 m²



The present document has strictly informative character. It may suffer variations for technical, legal and/or urban requirements. The furniture is purely informative. All measurements are approximate.



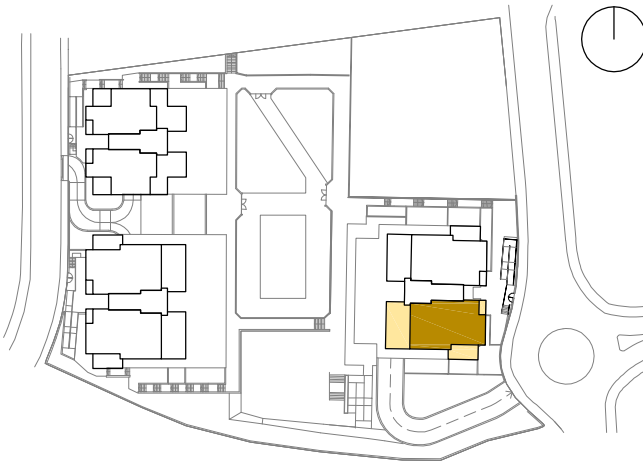
PROJECTS:
CA
Castelló Arquitectura

PROMOTES:
A
JAMSA

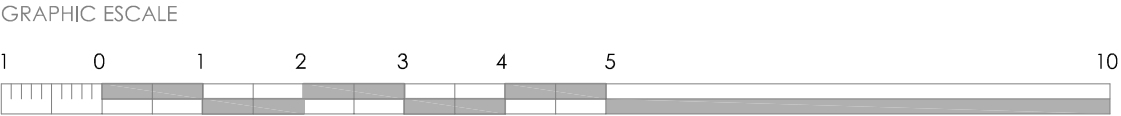


BLOCK D5. PENTHOUSE FLOOR 'LEFT'

3R+3B	
Uncovered terrace	142,80 m²
Covered terrace	14,50 m²
Constructed area	205,52 m²



The present document has strictly informative character. It may suffer variations for technical, legal and/or urban requirements. The furniture is purely informative. All measurements are approximate.



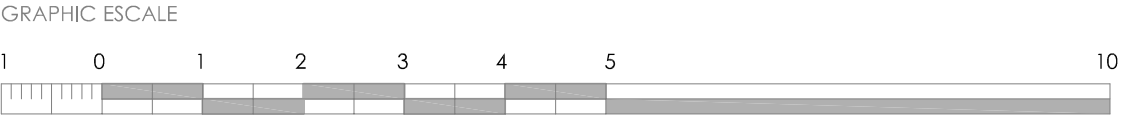


BLOCK D5. PENTHOUSE FLOOR 'LEFT'

3R+3B	
Uncovered terrace	142,80 m²
Covered terrace	14,50 m²
Constructed area	205,52 m²



The present document has strictly informative character. It may suffer variations for technical, legal and/or urban requirements. The furniture is purely informative. All measurements are approximate.



PROJECTS:
CA
Castelló Arquitectura

PROMOTES:
A
JAMSA