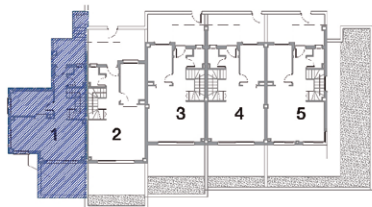
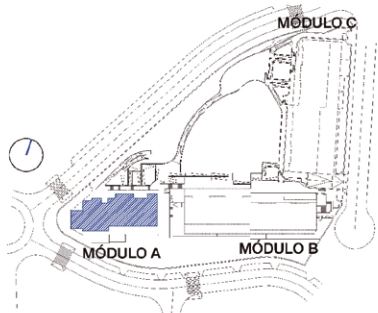


# Property Floor Plan

## Module A Property 1

### (3 bedrooms)



INTERIOR BUILT AREA	117.96 m <sup>2</sup>
BUILT AREA IN ROOFED TERRACE	9.95 m <sup>2</sup>
BUILT AREA IN UNROOFED TERRACE	24.48 m <sup>2</sup>
BUILT AREA IN GARDEN	0.00 m <sup>2</sup>

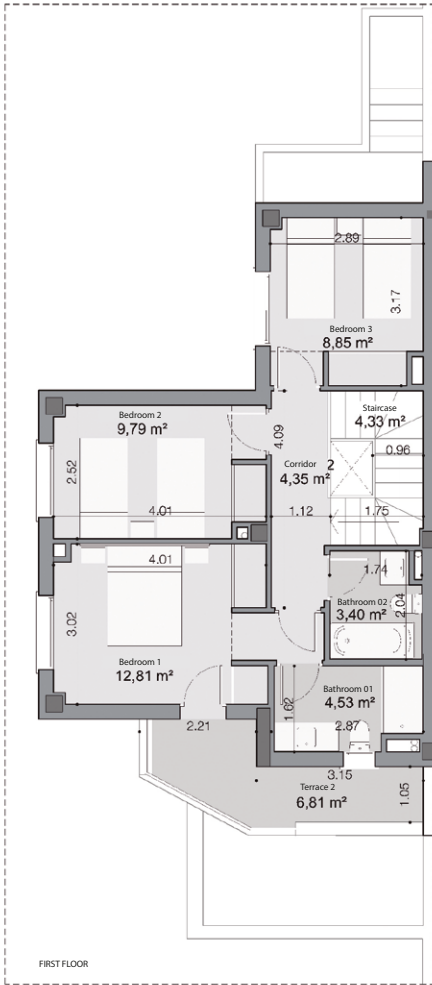
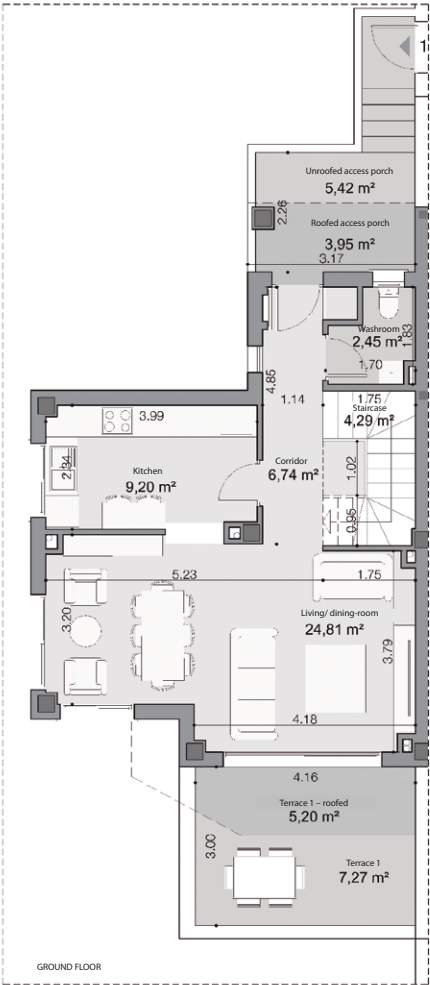
Total built area + Part of Community Areas 152.39 m<sup>2</sup>

INTERIOR USABLE AREA	96.40 m <sup>2</sup>
USABLE AREA IN ROOFED TERRACE	9.15 m <sup>2</sup>
USABLE AREA IN UNROOFED TERRACE	19.50 m <sup>2</sup>
USABLE AREA IN GARDEN	0.00 m <sup>2</sup>

Total usable area 125.05 m<sup>2</sup>

The areas described have been calculated according to Consumer Information Decree 218/2005 on the sale and rental of properties in Andalusia.

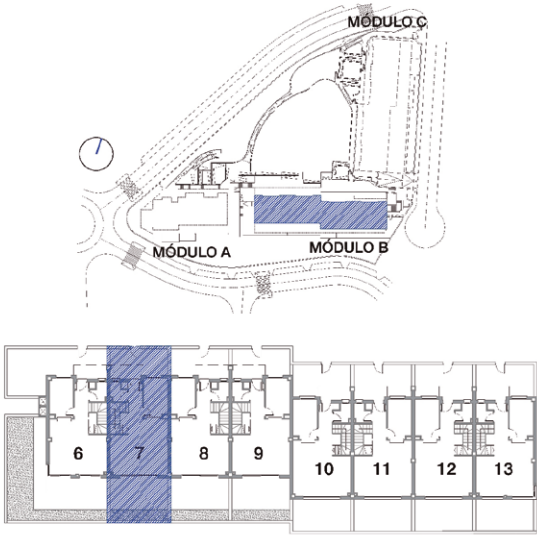
BUILT AREA	129.75 m <sup>2</sup>
USABLE AREA	106.04 m <sup>2</sup>



# Property Floor Plan

## Module B Property 7

(3 bedrooms )



INTERIOR BUILT AREA	112,57 m <sup>2</sup>
BUILT AREA IN ROOFED TERRACE	11,69 m <sup>2</sup>
BUILT AREA IN UNROOFED TERRACE	29,91 m <sup>2</sup>
BUILT AREA IN GARDEN	7,18 m <sup>2</sup>

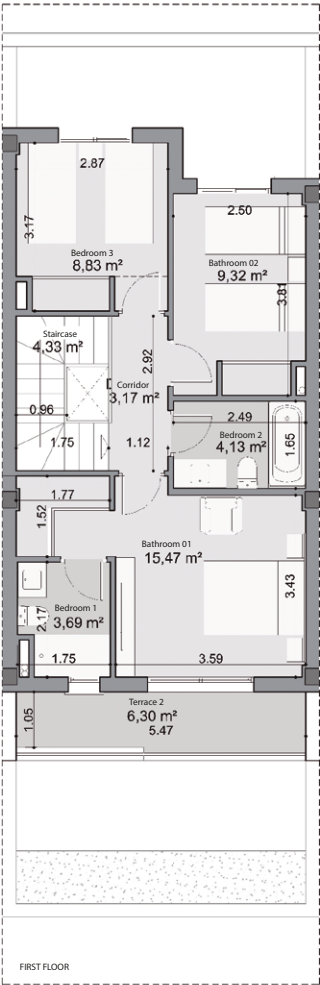
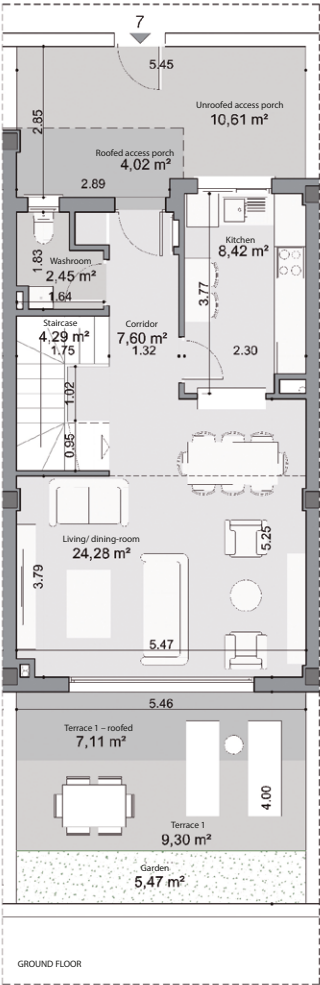
Total built area + Part of Community Areas 161,35 m<sup>2</sup>

INTERIOR USABLE AREA	95,98 m <sup>2</sup>
USABLE AREA IN ROOFED TERRACE	11,13 m <sup>2</sup>
USABLE AREA IN UNROOFED TERRACE	26,21 m <sup>2</sup>
USABLE AREA IN GARDEN	5,47 m <sup>2</sup>

Total usable area 138,79 m<sup>2</sup>

The areas described have been calculated according to Consumer Information Decree 218/2005 on the sale and rental of properties in Andalusia.

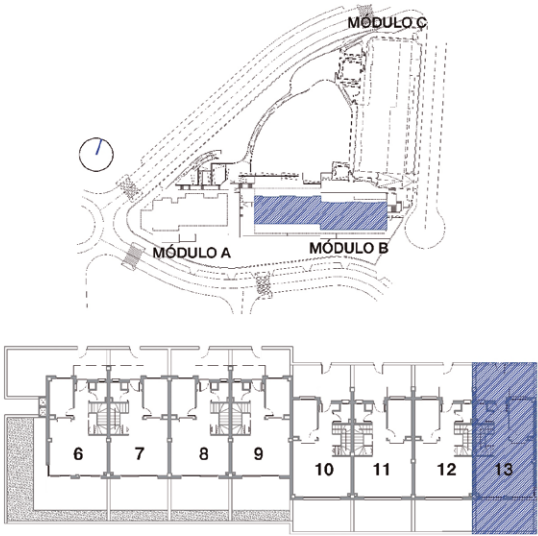
BUILT AREA	123,83 m <sup>2</sup>
USABLE AREA	105,58 m <sup>2</sup>



# Property Floor Plan

## Module B Property 13

### (3 bedrooms)



INTERIOR BUILT AREA	115,08m <sup>2</sup>
BUILT AREA IN ROOFED TERRACE	11,86m <sup>2</sup>
BUILT AREA IN UNROOFED TERRACE	34,98m <sup>2</sup>
BUILT AREA IN GARDEN	0,00 m <sup>2</sup>

Total built area + Part of Community Areas 161,92 m<sup>2</sup>

INTERIOR USABLE AREA	95,98 m <sup>2</sup>
USABLE AREA IN ROOFED TERRACE	11,13 m <sup>2</sup>
USABLE AREA IN UNROOFED TERRACE	28,92m <sup>2</sup>
USABLE AREA IN GARDEN	0,00 m <sup>2</sup>

Total usable area 136,03 m<sup>2</sup>

The areas described have been calculated according to Consumer Information Decree 218/2005 on the sale and rental of properties in Andalusia.

BUILT AREA	126,59 m <sup>2</sup>
USABLE AREA	105,58 m <sup>2</sup>

