

A scenic view of a golf course with a clear blue sky and a view of the ocean in the distance. The foreground is a lush green golf course with several large, mature trees on the left and right sides. The middle ground shows a line of trees leading to a view of the ocean. The sky is a clear, deep blue.

riva

RESIDENCES
cabopino golf marbella

A boutique development of 6 luxury residences with stunning sea views

Located on the 8th hole at
Cabopino Golf Marbella



Introduction

A boutique development of 6 semi detached luxury 4 bedroom contemporary residences in Artola, Cabopino with panoramic and picturesque views to the sea over Cabopino Golf and it's fairway lined canopy of pine trees.

Located just east of Marbella town, Cabopino is known for it's natural beauty, pine forest and the famous Artola Beach which is widely regarded as one of the top beaches in Spain with golden sand dunes, exceptionally clean water and great beach restaurants.

Cabopino's stylish marina is just a short stroll away, and while smaller and more intimate than Puerto Banus, features an array of facilities including a wide choice of stylish restaurants, lounge bars and shops.

Taking full advantage of the natural terrain, elevated position and proximity to the beach, all 6 residences boast stunning views of the sea from every floor.

Distributed over 3 levels each residence has a wide array of features for luxury and contemporary living including; a private pool, personal elevator, rooftop solarium, double-car underground garage and large stylish walk-in dressing rooms also with sea views.

The community features lush gardens with a beautiful pool area and is securely gated around it's perimeter.





Property Highlights



Stunning Sea Views



High Quality Finishes



Personal Elevator



Private Pools



Walkin Wardrobes









Facts & Figures

Financial



Community fees	€400/mn
Annual property taxes	€600/yr

Size



Avg. built area	292.52 m ²
Avg. terraces area	195.38 m ²
Avg. garden area	78.28 m ²
Ceiling heights	3.5m - 7.0m
Private pool size	3m x 3m

Location

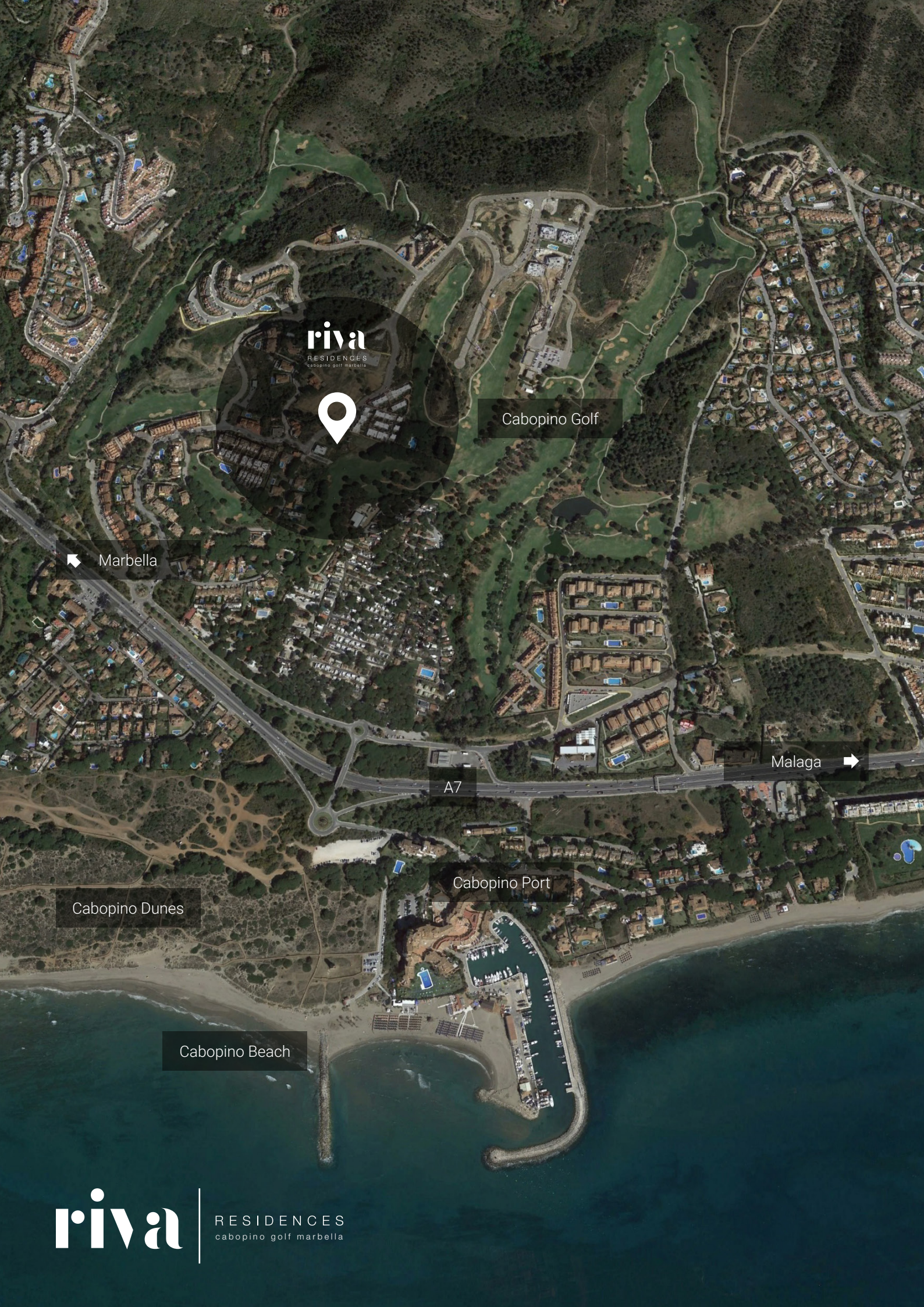


Municipality	Mabrella
Coordinates	36°29'35.5"N 4°44'37.8"W
Height above sea level	69 m

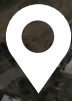
Distance



Airport	42 km	30 min	N/A min
Beach	1.7 km	5 min	20 min
Golf Clubhouse	1.0 km	2 min	10 min
Supermarket	1.8 km	5 min	20 min
Puerto Banus	25 km	23 min	N/A min



riva
RESIDENCES
cabopino golf marbella



Cabopino Golf

Marbella

Malaga

A7

Cabopino Port

Cabopino Dunes

Cabopino Beach

riva

RESIDENCES
cabopino golf marbella



Site Plan



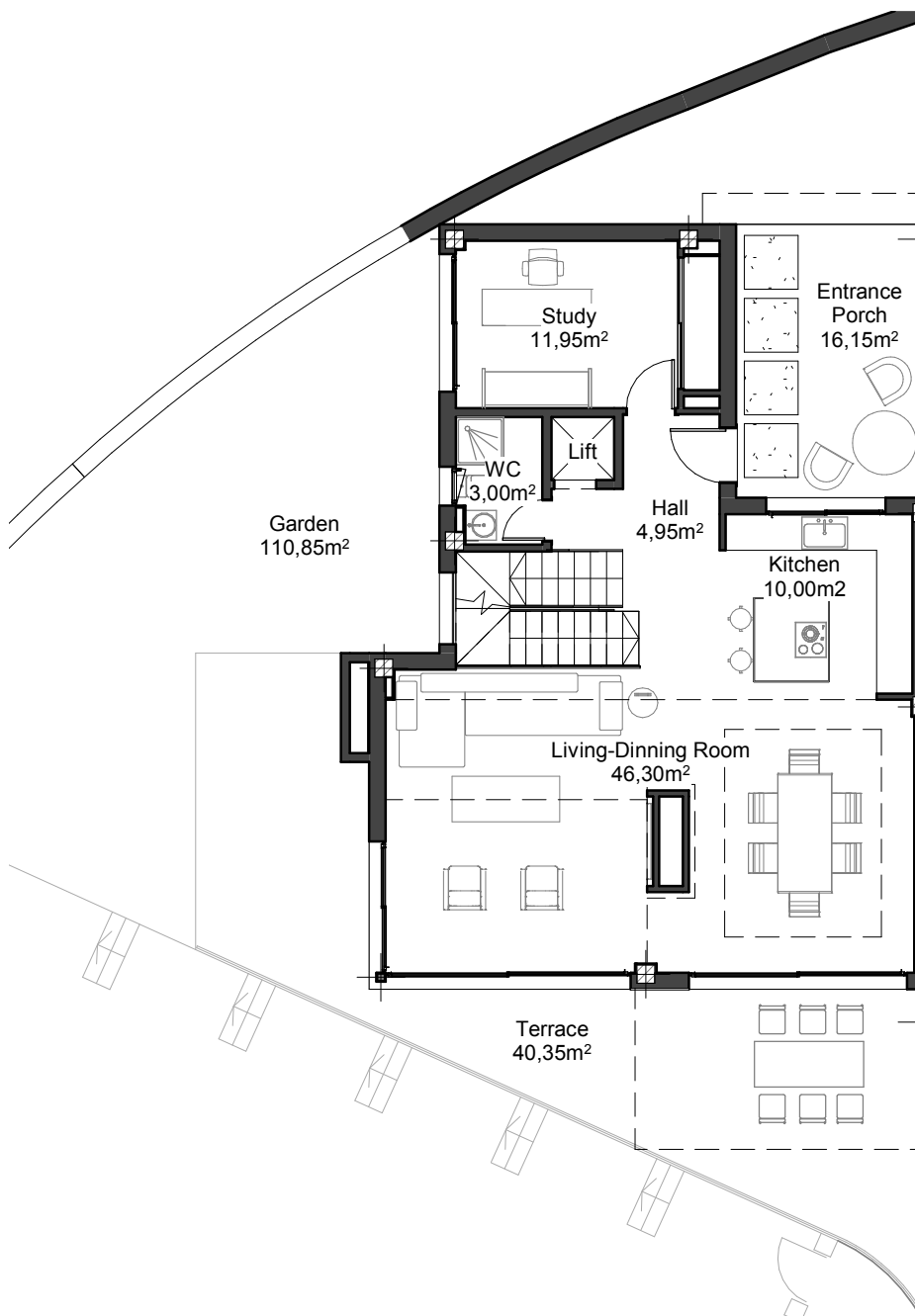
Floor Plans

Villa 01

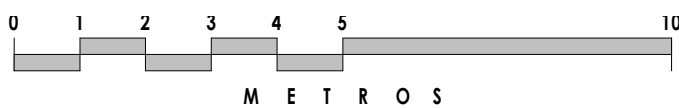
Details

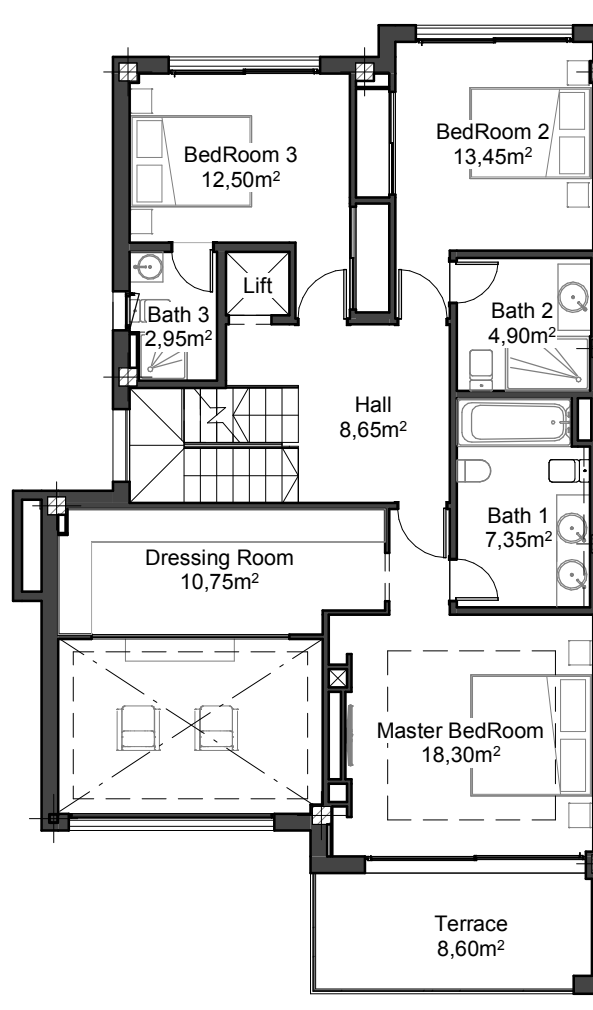
Beds	4
Baths	5

Size	Built	Terraces	Garden
Basement	64.28 m ²	- m ²	- m ²
Ground Floor	95.66 m ²	57.30 m ²	115.80 m ²
First Floor	115.16 m ²	9.60 m ²	- m ²
Roof Solarium	11.45 m ²	94.15 m ²	- m ²
TOTAL	286.55 m²	161.08 m²	115.80 m²

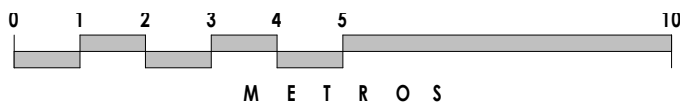


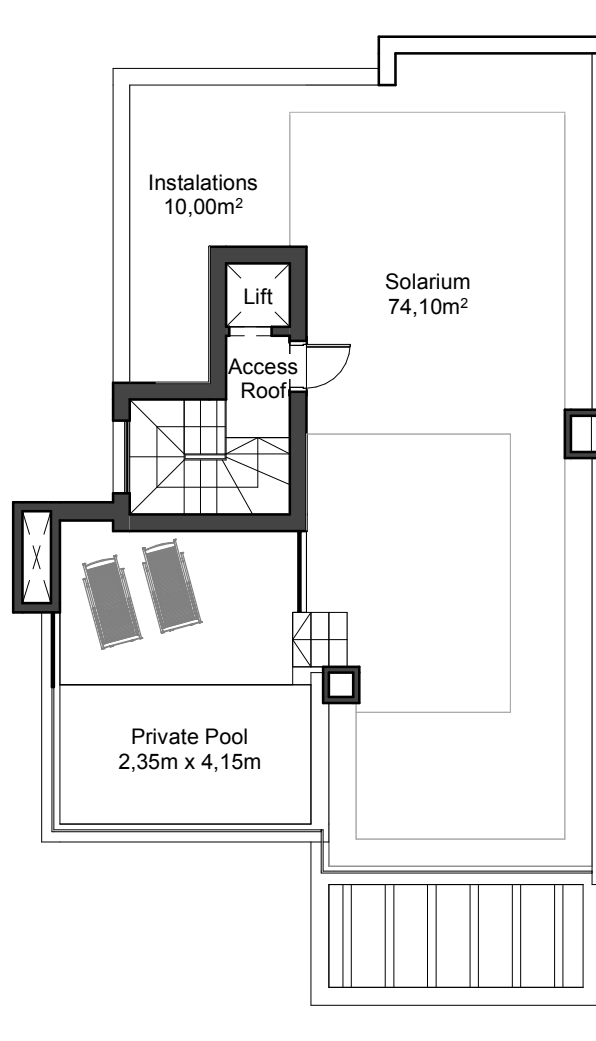
Ground Floor



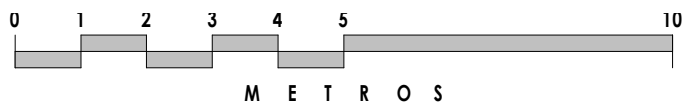


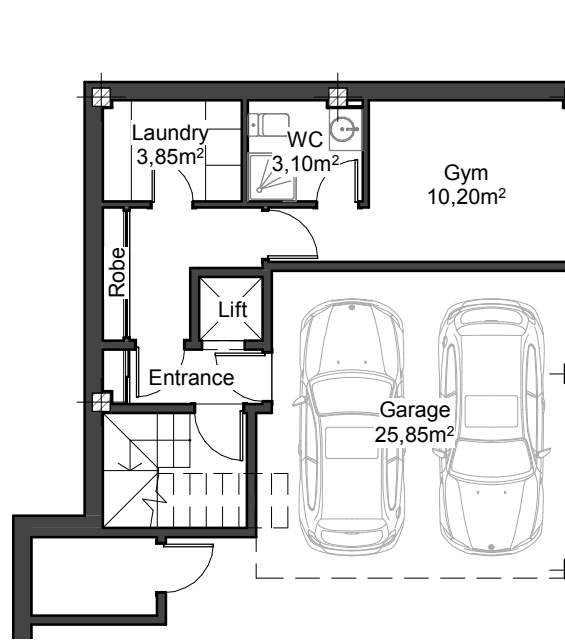
First Floor



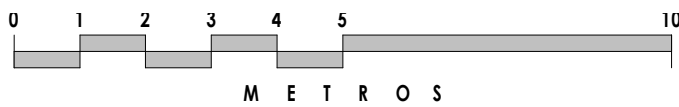


Roof Solarium





Basement Level

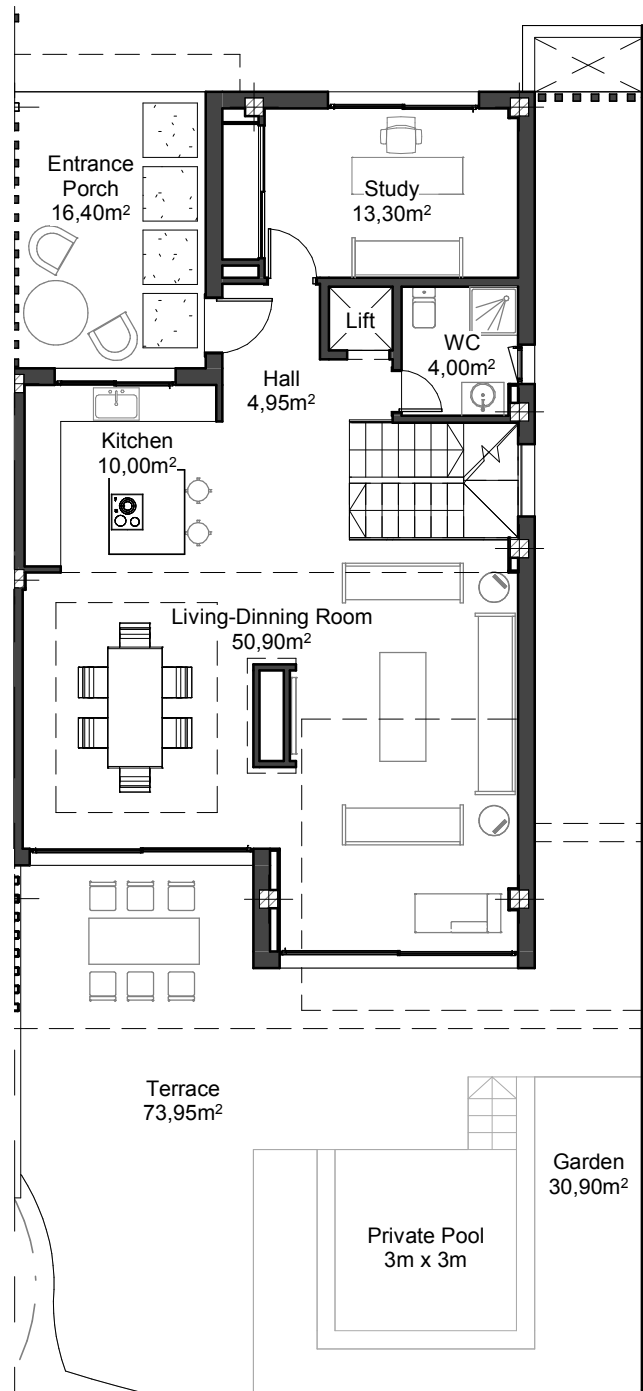


Villa 02

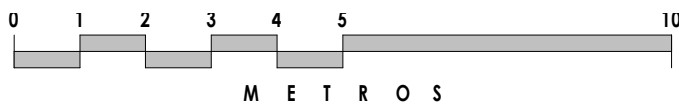
Details

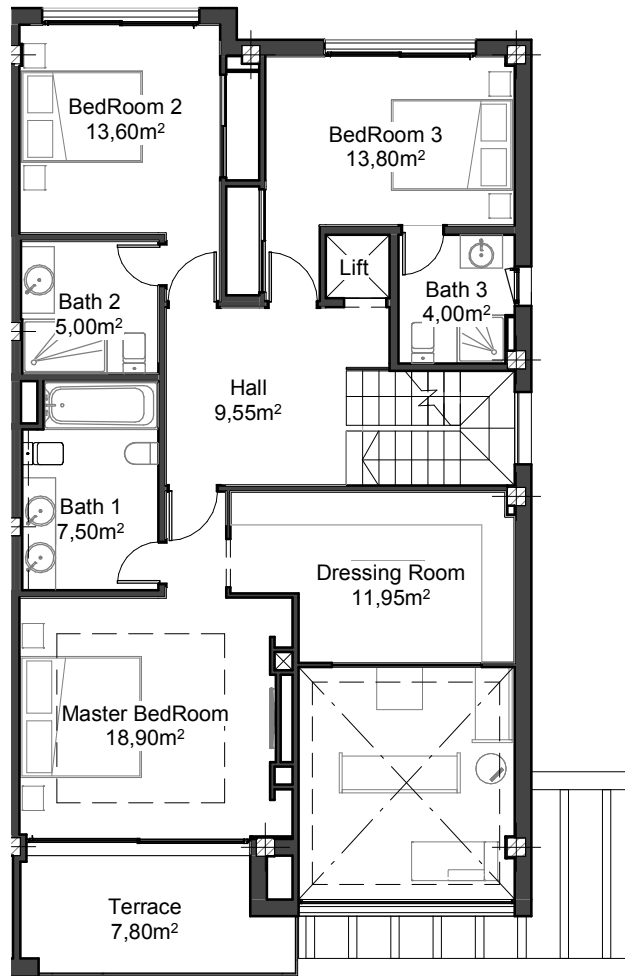
Beds	5
Baths	5

Size	Built	Terraces	Garden
Lower Ground	78.40 m ²	- m ²	- m ²
Ground Floor	103.49 m ²	92.78 m ²	32.50 m ²
First Floor	122.64.20 m ²	8.70 m ²	- m ²
Roof Solarium	12.60 m ²	109.74 m ²	- m ²
TOTAL	317.13 m²	211.22 m²	32.50 m²

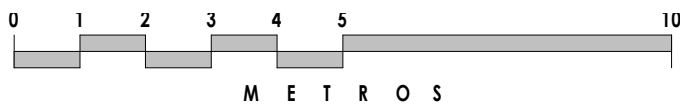


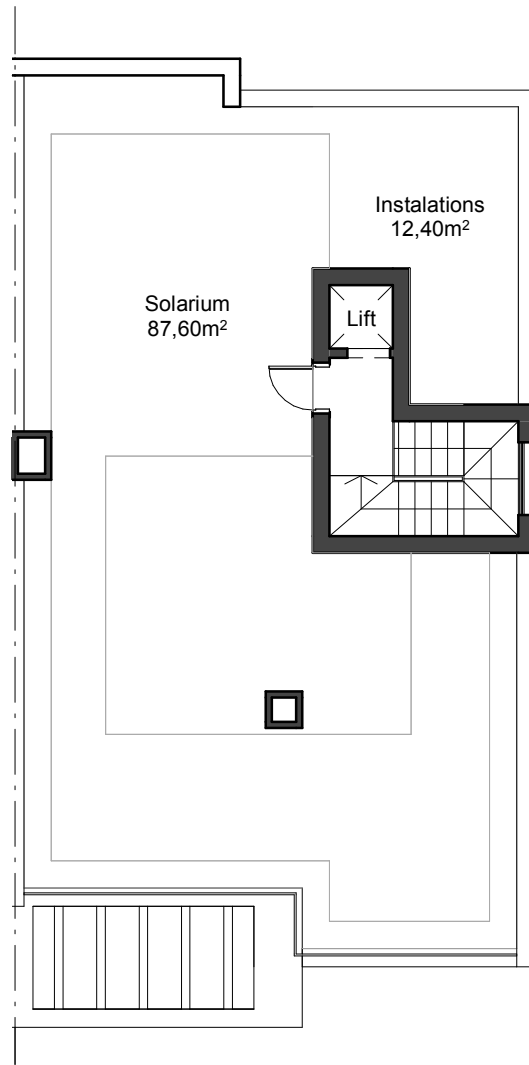
Ground Floor



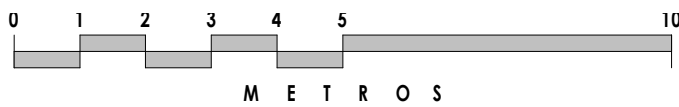


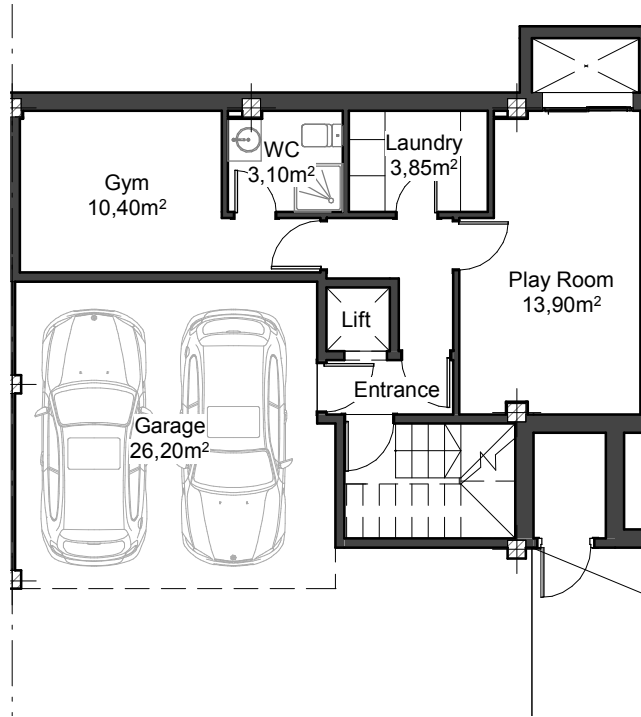
First Floor



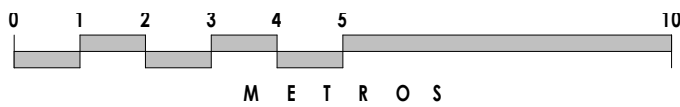


Roof Solarium





Basement Level



Villa 03

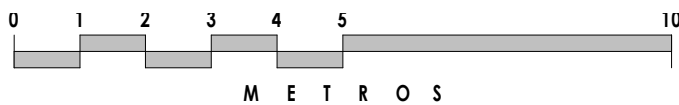
Details

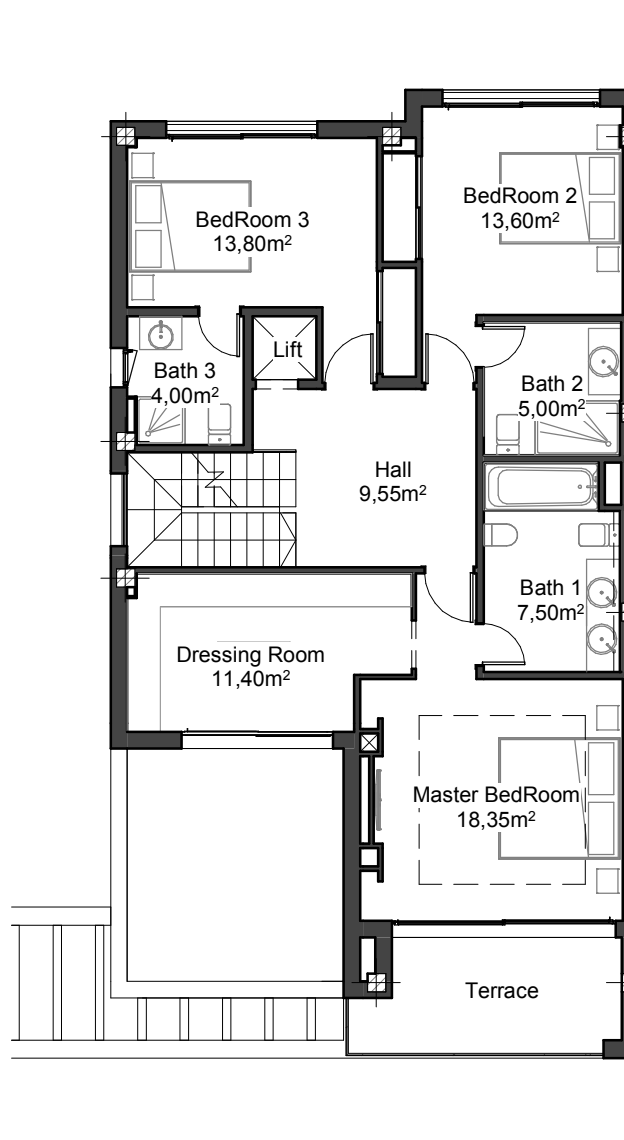
Beds	5
Baths	5

Size	Built	Terraces	Garden
Lower Ground	79.68 m ²	- m ²	- m ²
Ground Floor	103.49 m ²	76.52 m ²	49.55 m ²
First Floor	106.78 m ²	8.70 m ²	- m ²
Roof Solarium	12.60 m ²	93.38 m ²	- m ²
TOTAL	302.55 m²	178.60 m²	49.55 m²

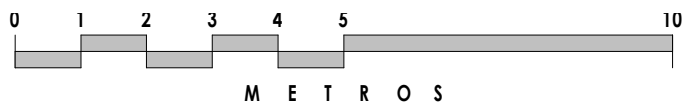


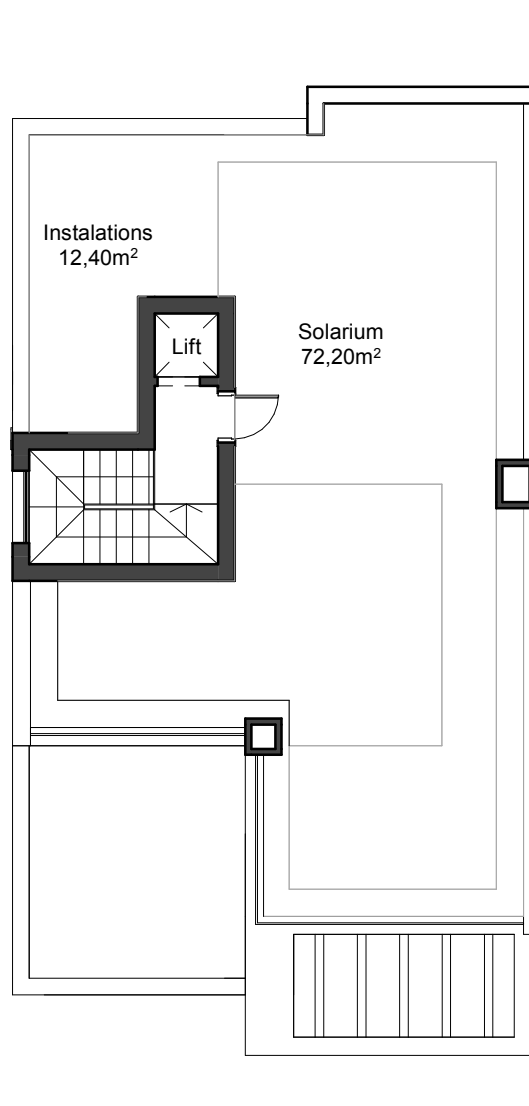
Ground Floor



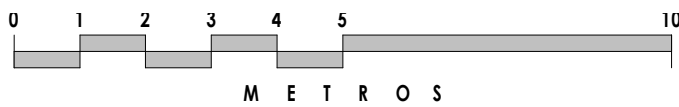


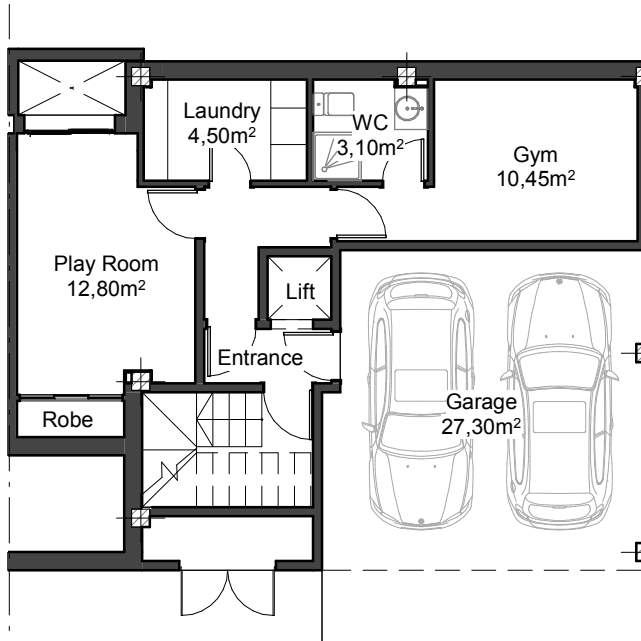
First Floor



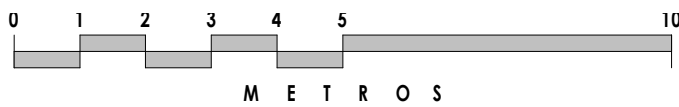


Roof Solarium





Basement Level

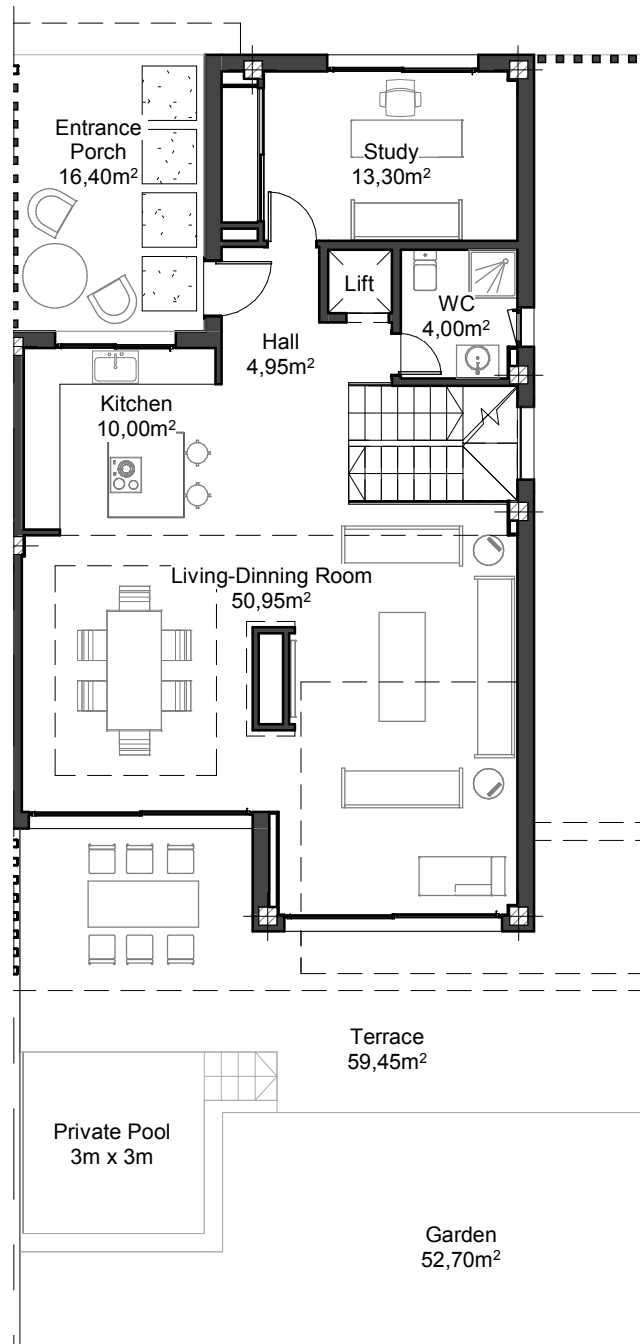


Villa 04

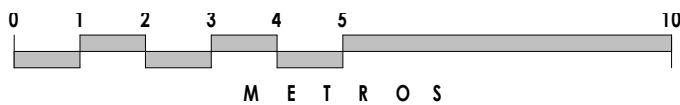
Details

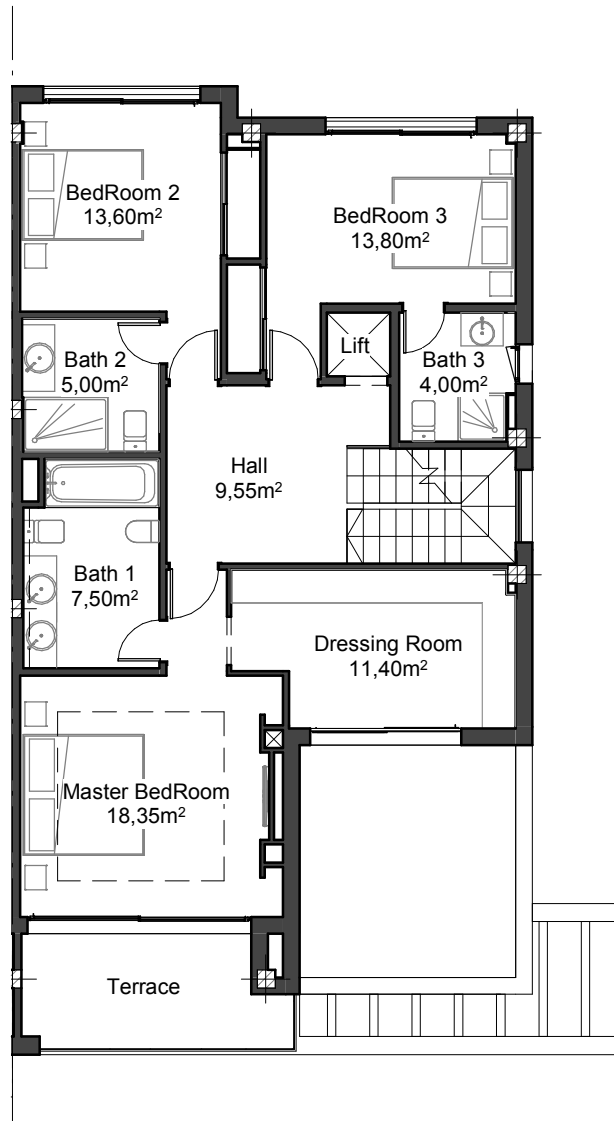
Beds	5
Baths	5

Size	Built	Terraces	Garden
Lower Ground	80.92 m ²	- m ²	- m ²
Ground Floor	103.49 m ²	78.24 m ²	54.00 m ²
First Floor	106.78 m ²	8.70 m ²	- m ²
Roof Solarium	12.60 m ²	93.38 m ²	- m ²
TOTAL	303.79 m²	180.32 m²	54.00 m²

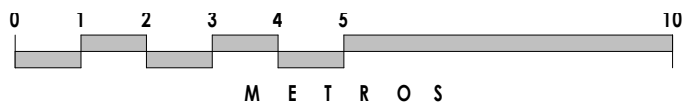


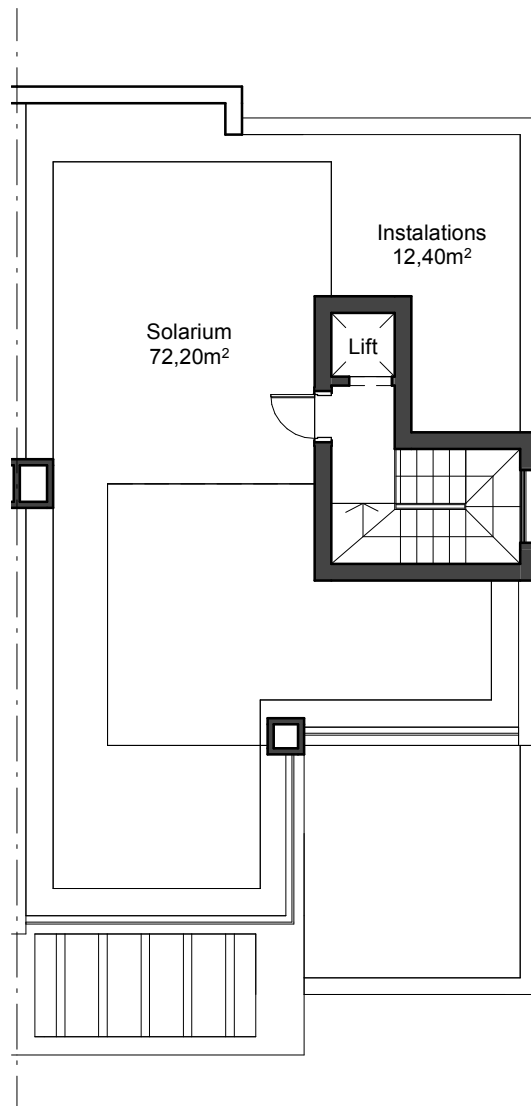
Ground Floor



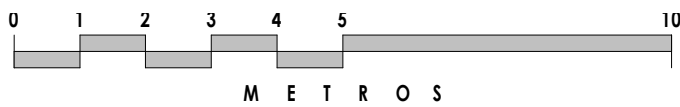


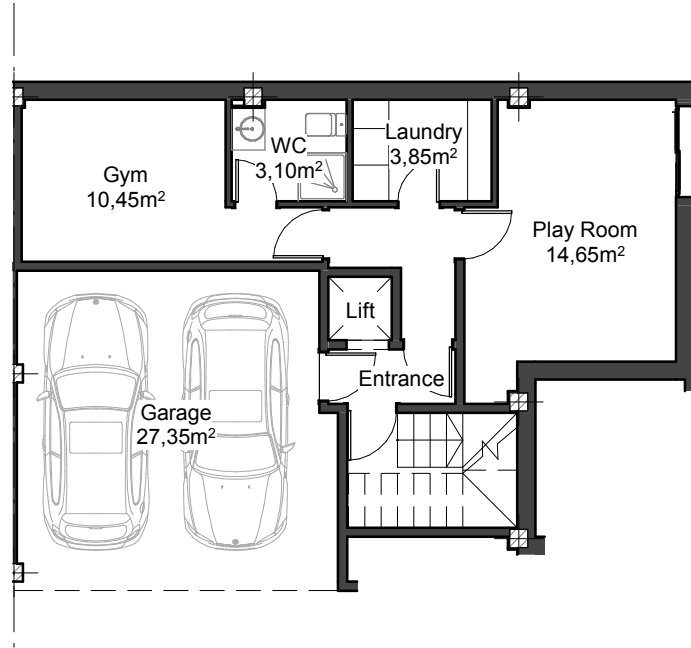
First Floor



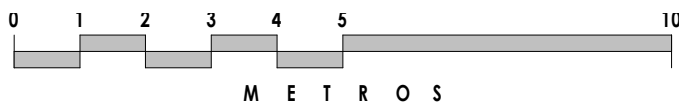


Roof Solarium





Basement Level

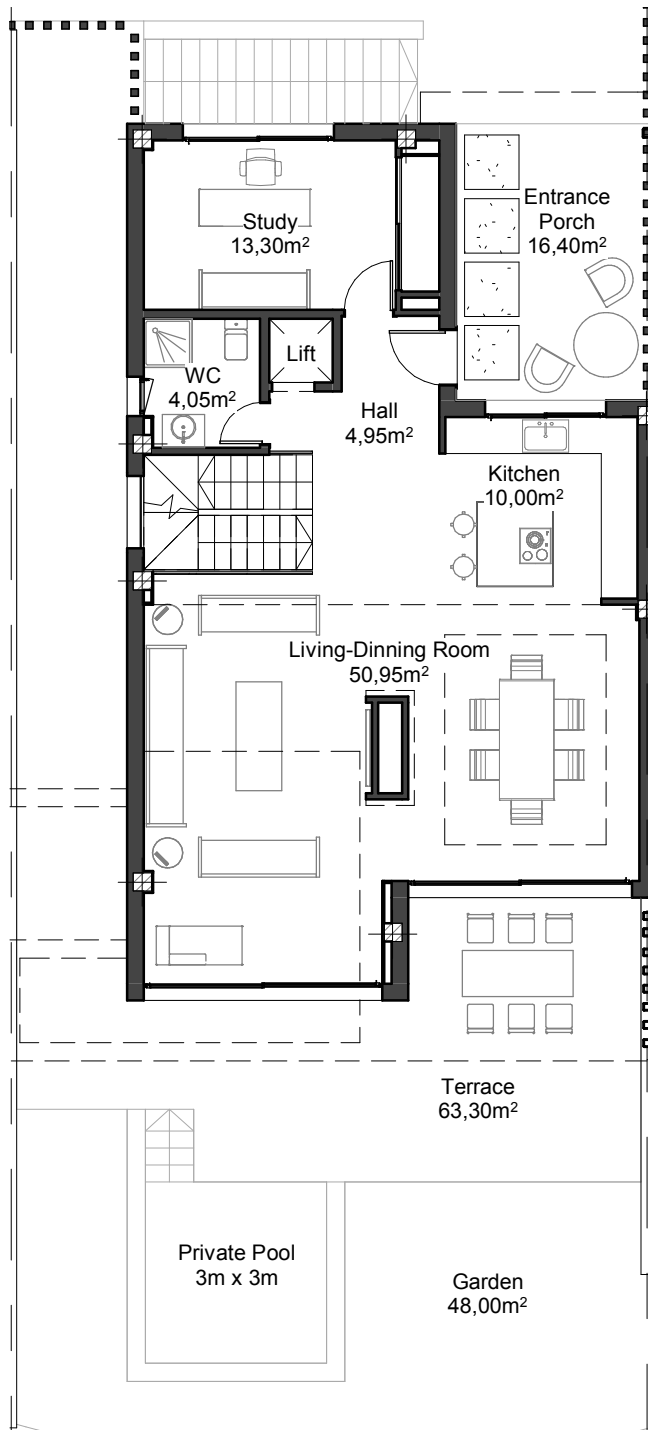


Villa 05

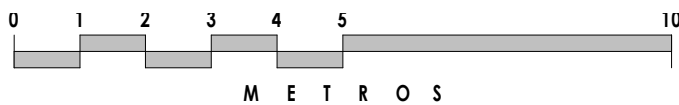
Details

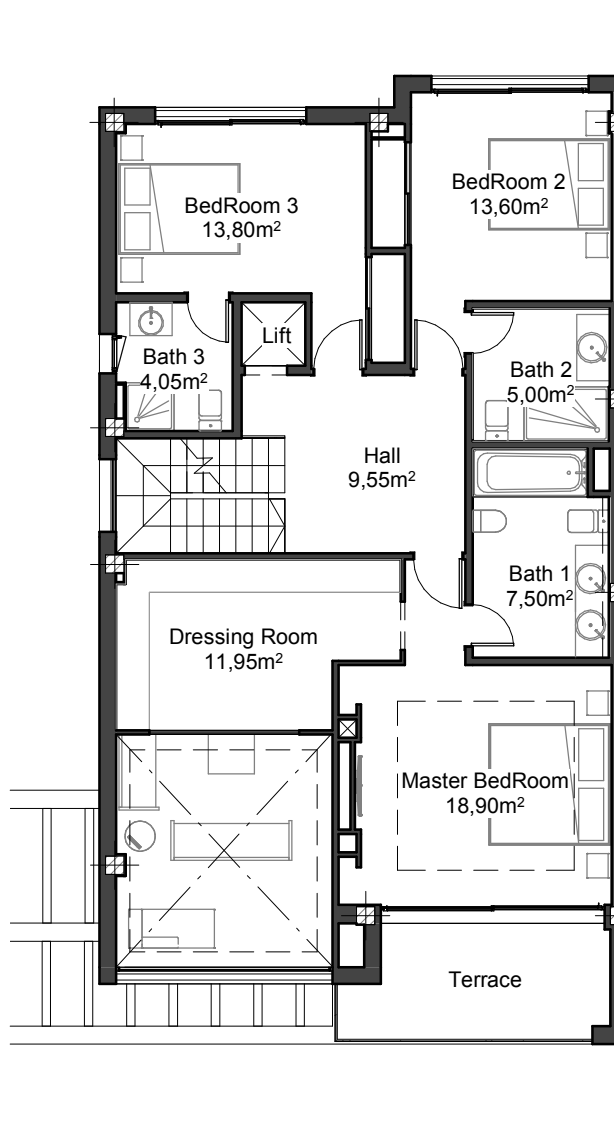
Beds	4
Baths	5

Size	Built	Terraces	Garden
Lower Ground	66.80 m ²	- m ²	- m ²
Ground Floor	103.48 m ²	82.23 m ²	48.50 m ²
First Floor	122.64 m ²	8.70 m ²	- m ²
Roof Solarium	12.60 m ²	109.74 m ²	- m ²
TOTAL	305.52 m²	200.67 m²	48.50 m²

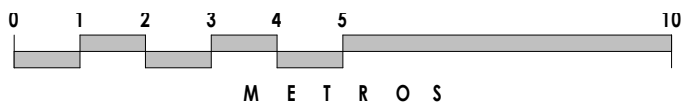


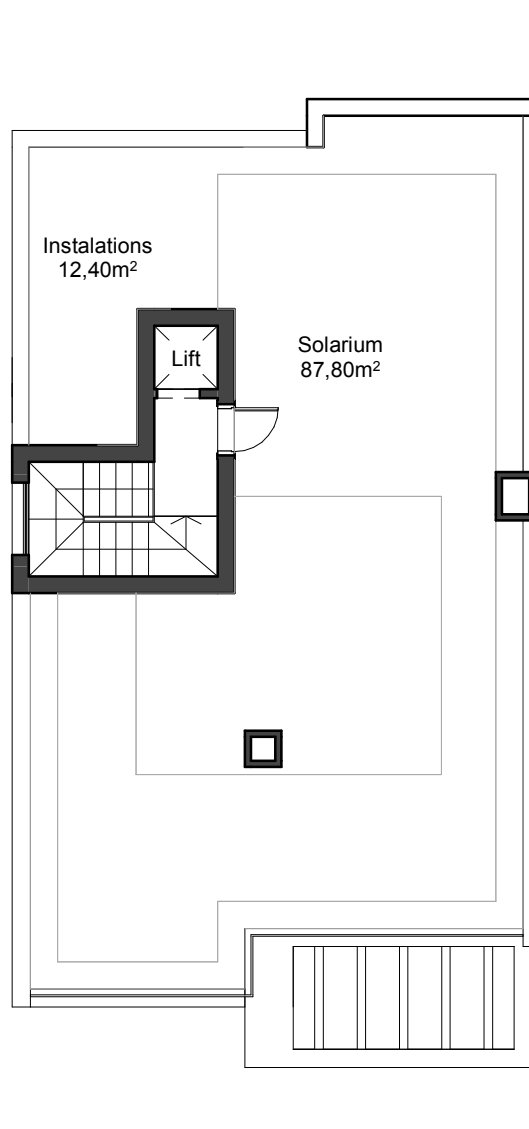
Ground Floor



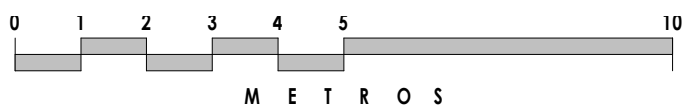


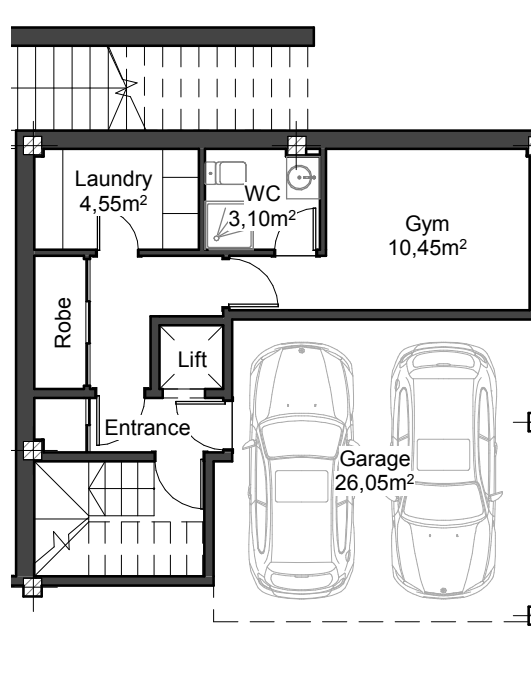
First Floor



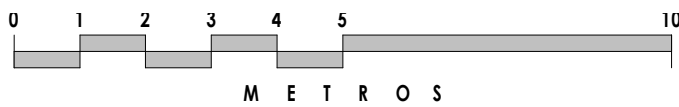


Roof Solarium





Basement Level

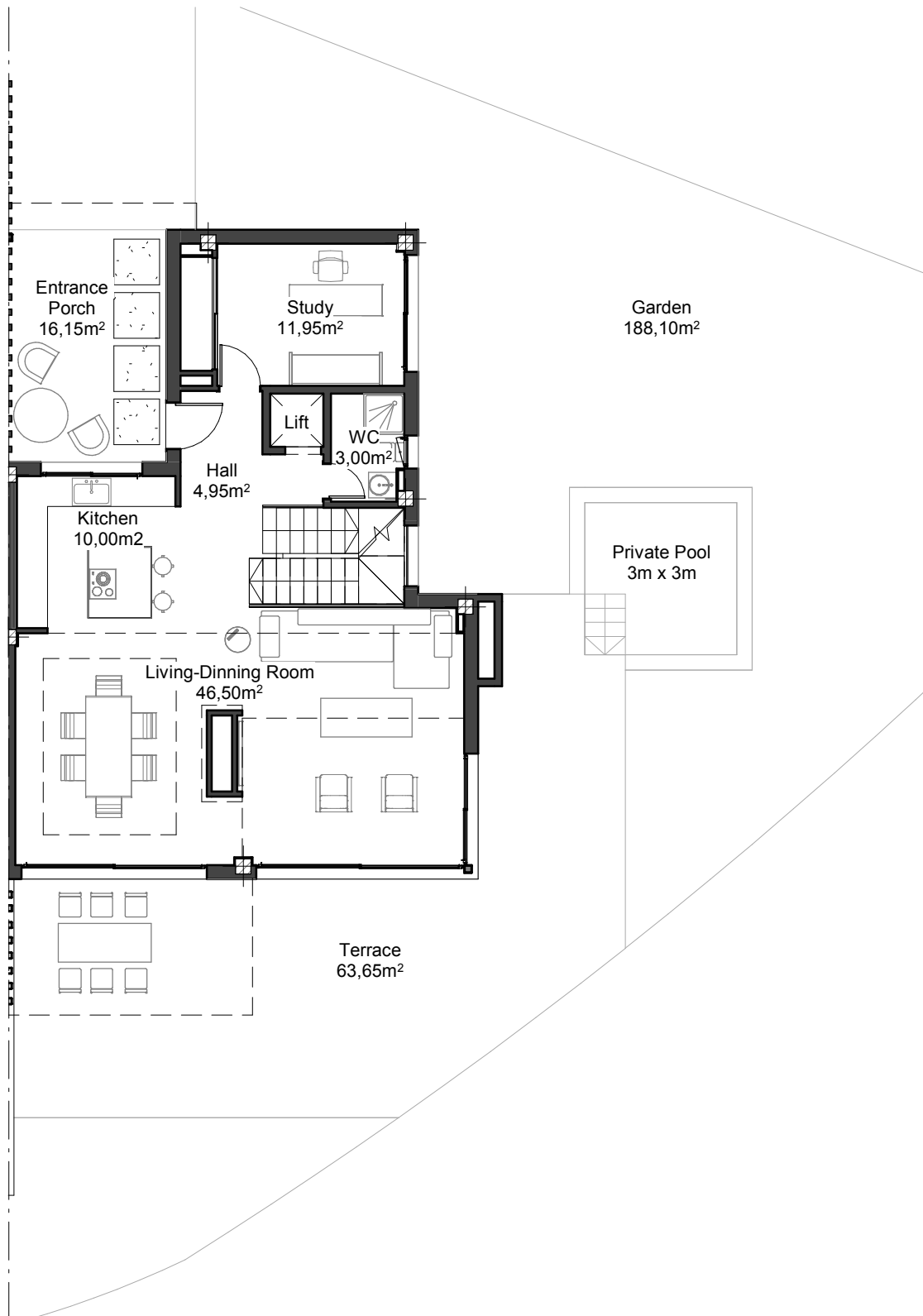


Villa 06

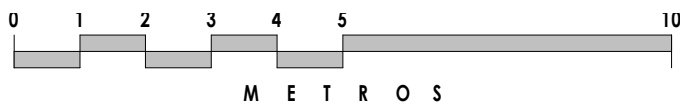
Details

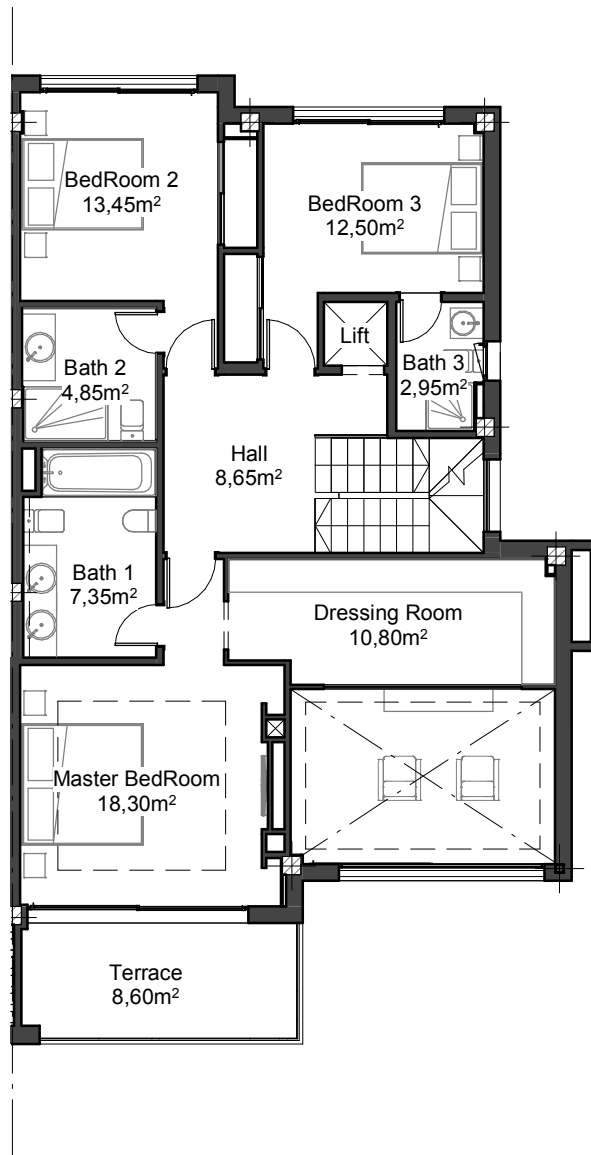
Beds	4
Baths	5

Size	Built	Terraces	Garden
Lower Ground	64.10 m ²	- m ²	- m ²
Ground Floor	95.65 m ²	80.80 m ²	169.30 m ²
First Floor	102.85 m ²	9.60 m ²	- m ²
Roof Solarium	11.45 m ²	104.10 m ²	- m ²
TOTAL	274.05 m²	194.50 m²	169.30 m²

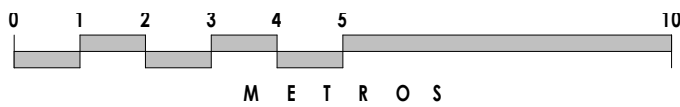


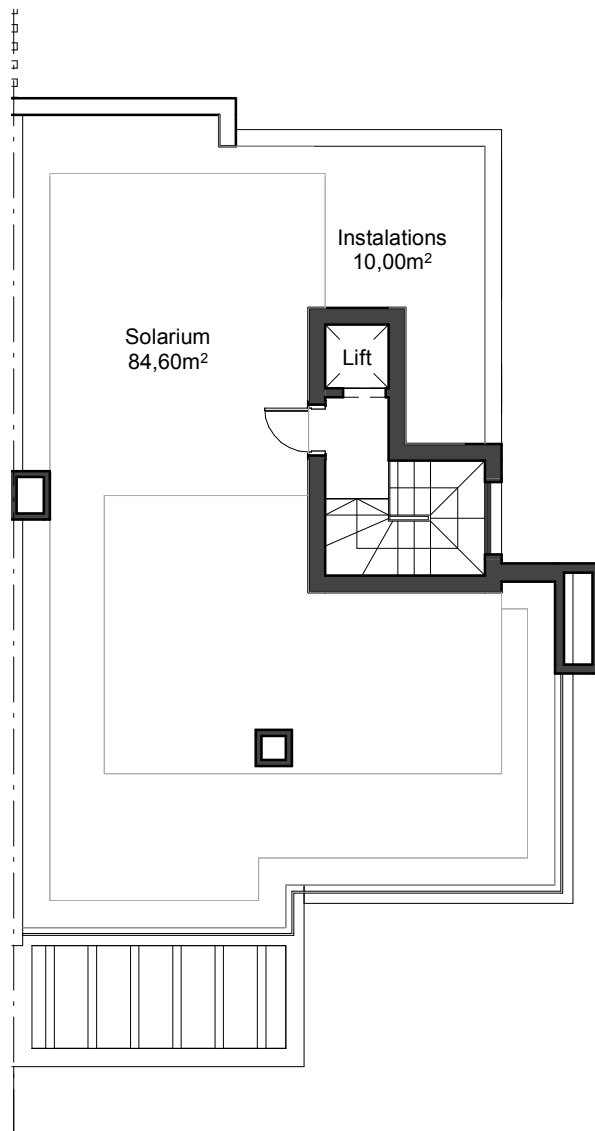
Ground Floor



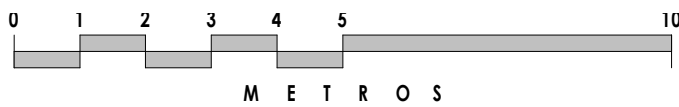


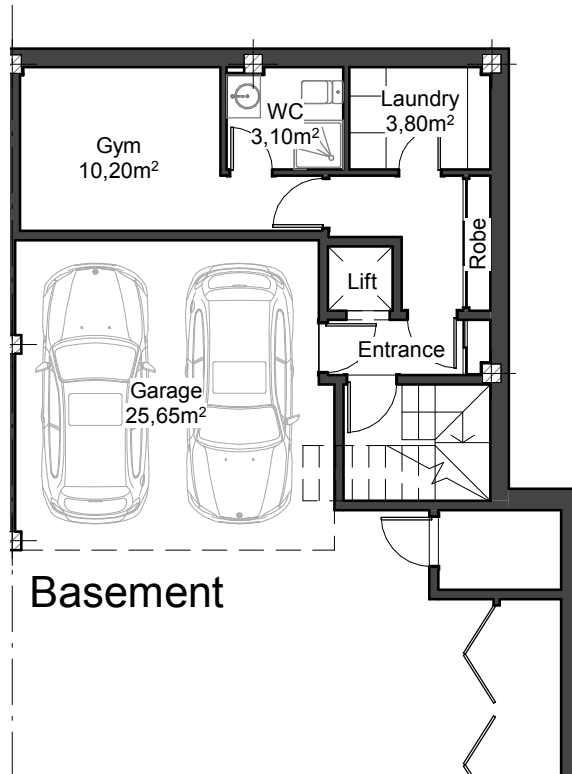
First Floor





Roof Solarium





Basement Level

