

Site Plan



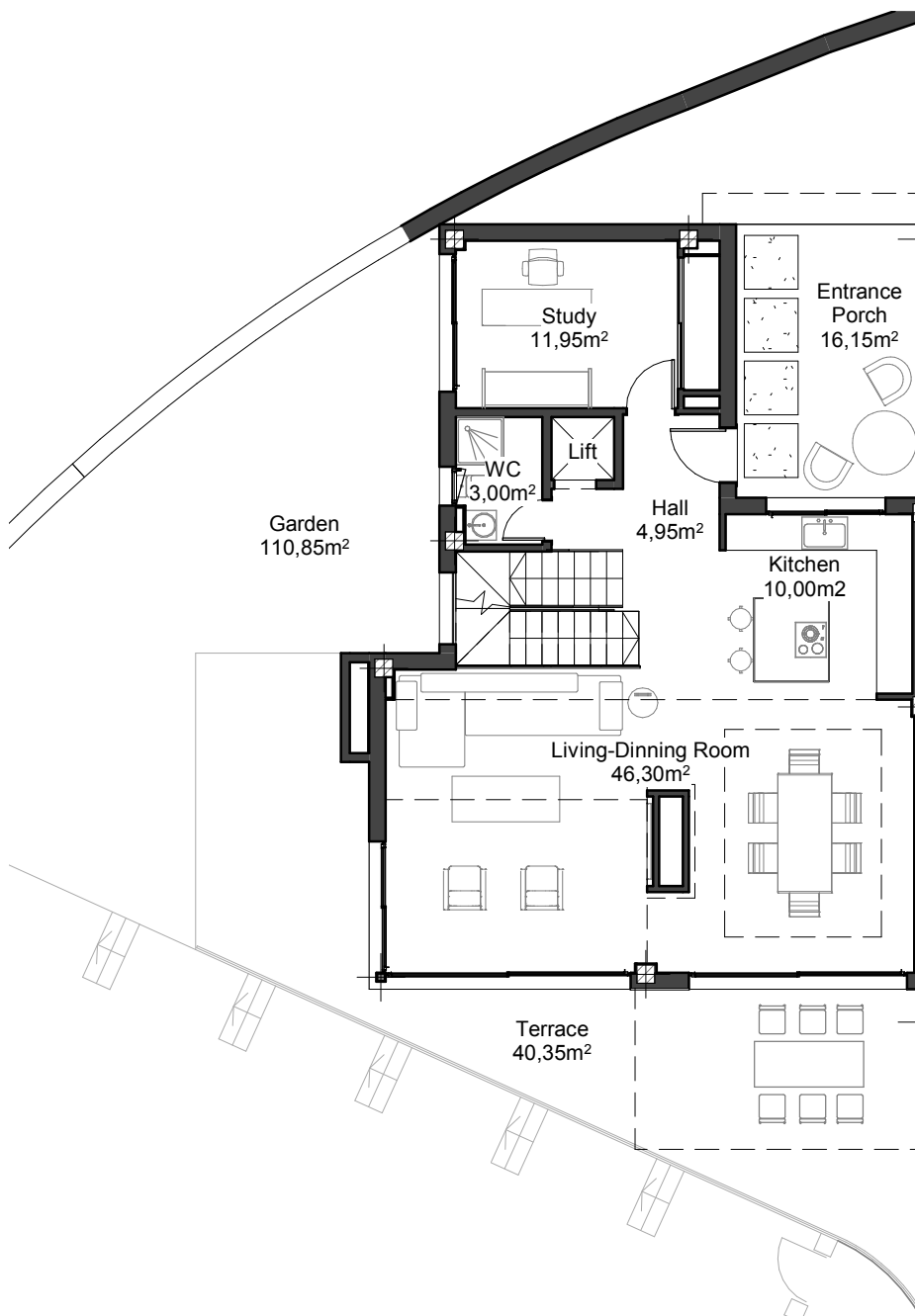
Floor Plans

Villa 01

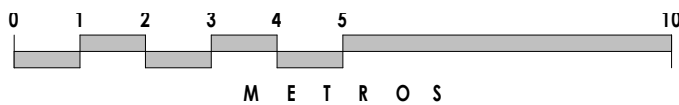
Details

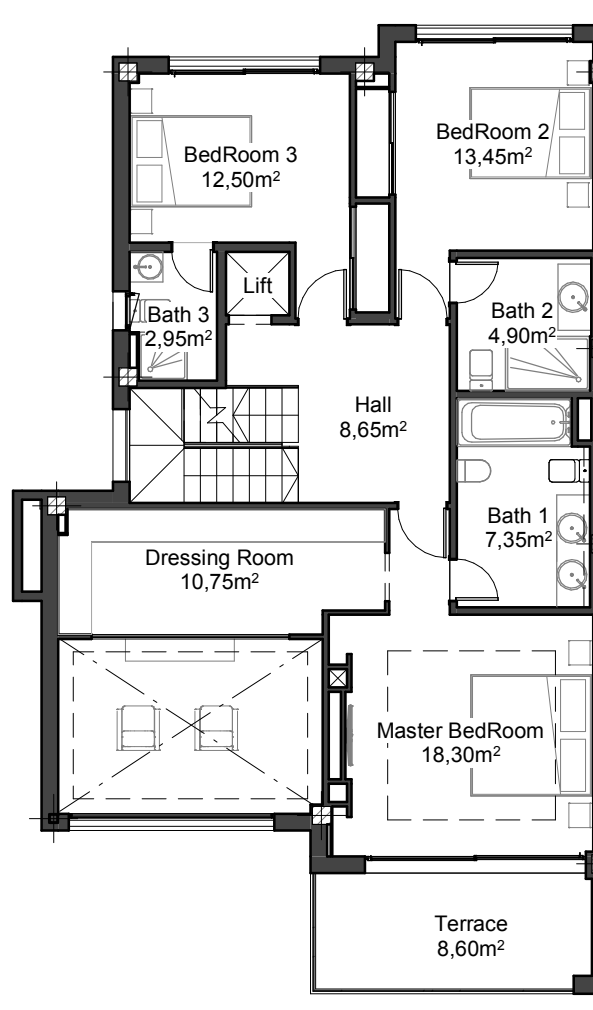
Beds	4
Baths	5

Size	Built	Terraces	Garden
Basement	64.28 m ²	- m ²	- m ²
Ground Floor	95.66 m ²	57.30 m ²	115.80 m ²
First Floor	115.16 m ²	9.60 m ²	- m ²
Roof Solarium	11.45 m ²	94.15 m ²	- m ²
TOTAL	286.55 m²	161.08 m²	115.80 m²

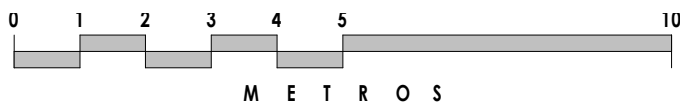


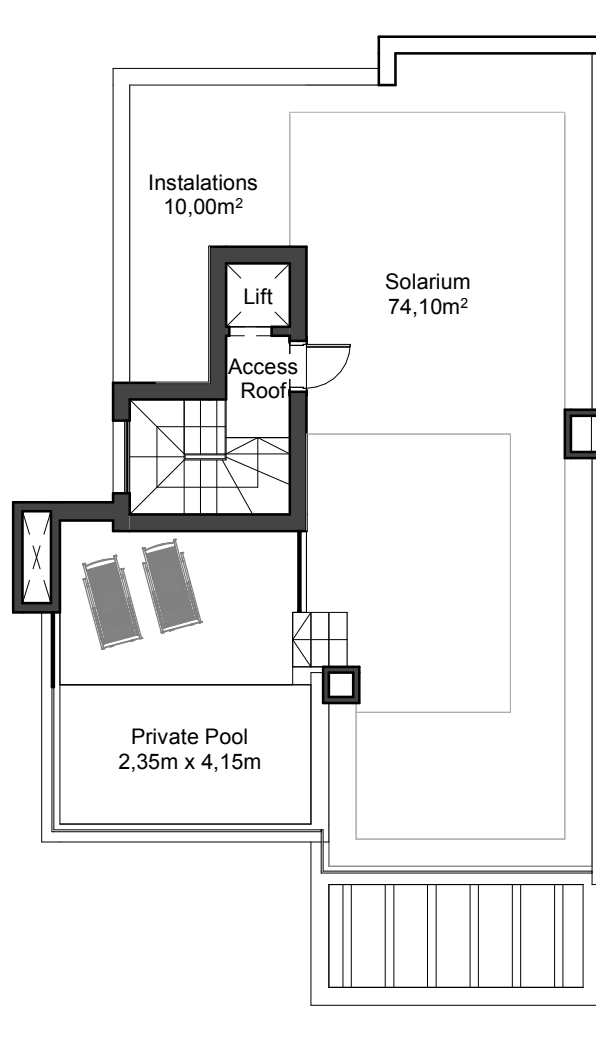
Ground Floor



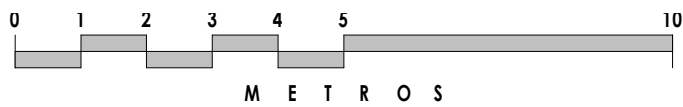


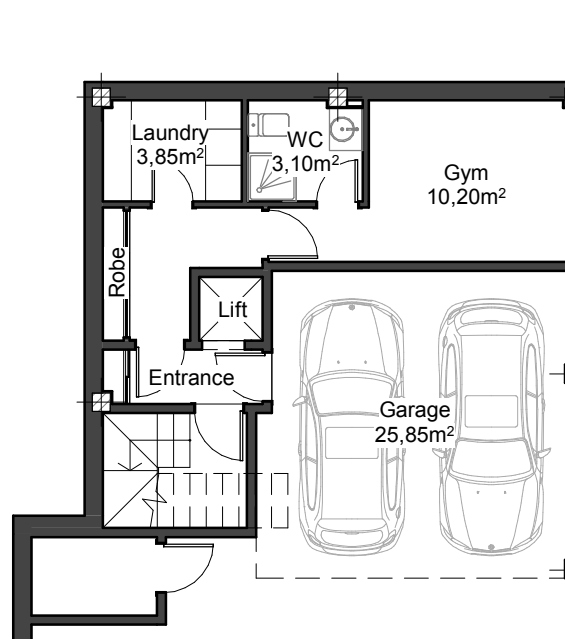
First Floor



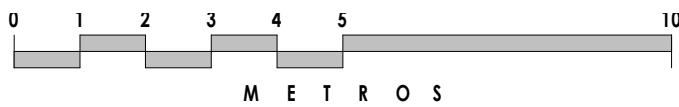


Roof Solarium





Basement Level

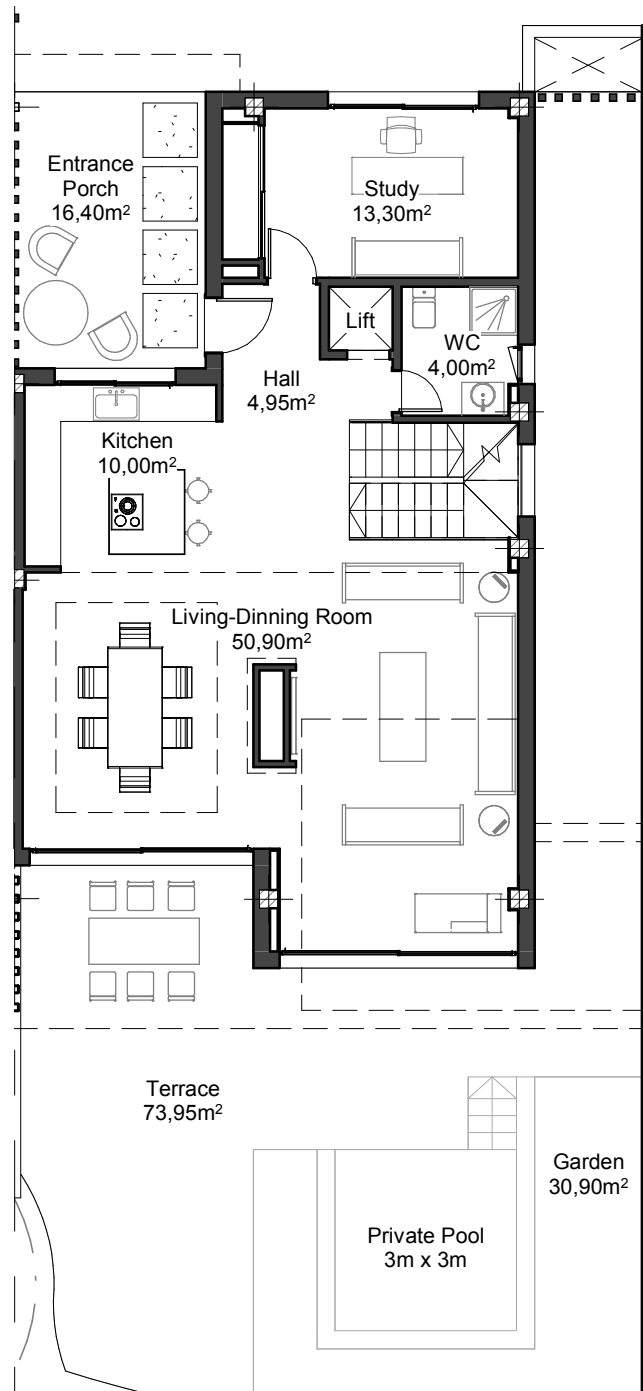


Villa 02

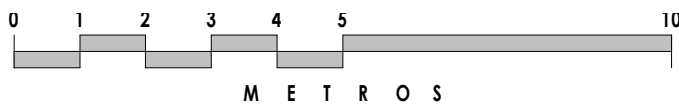
Details

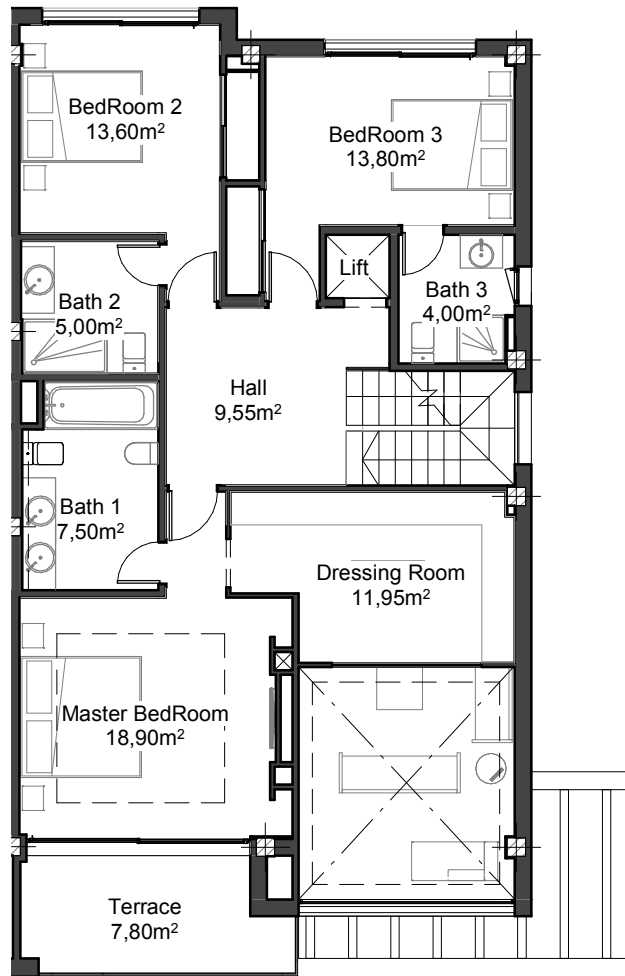
Beds	5
Baths	5

Size	Built	Terraces	Garden
Lower Ground	78.40 m ²	- m ²	- m ²
Ground Floor	103.49 m ²	92.78 m ²	32.50 m ²
First Floor	122.64.20 m ²	8.70 m ²	- m ²
Roof Solarium	12.60 m ²	109.74 m ²	- m ²
TOTAL	317.13 m²	211.22 m²	32.50 m²

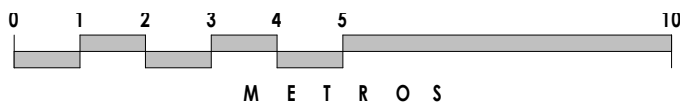


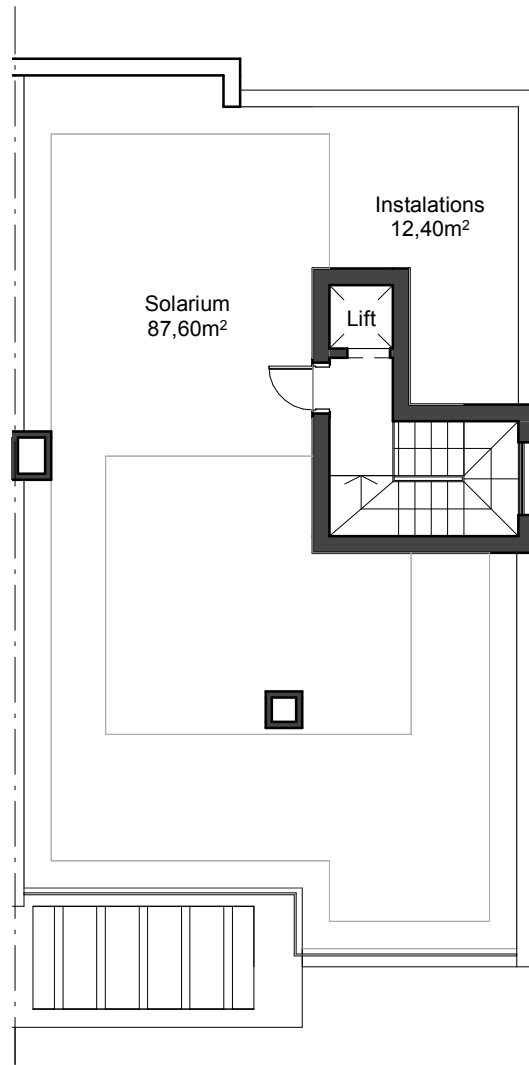
Ground Floor



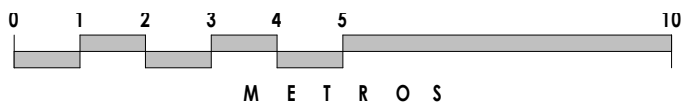


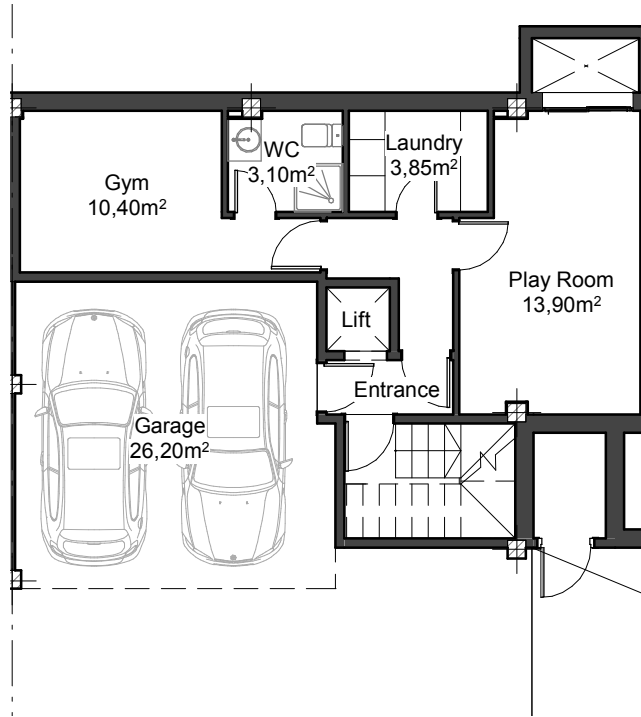
First Floor



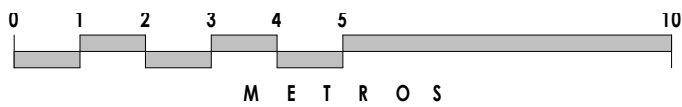


Roof Solarium





Basement Level



Villa 03

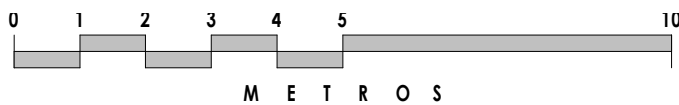
Details

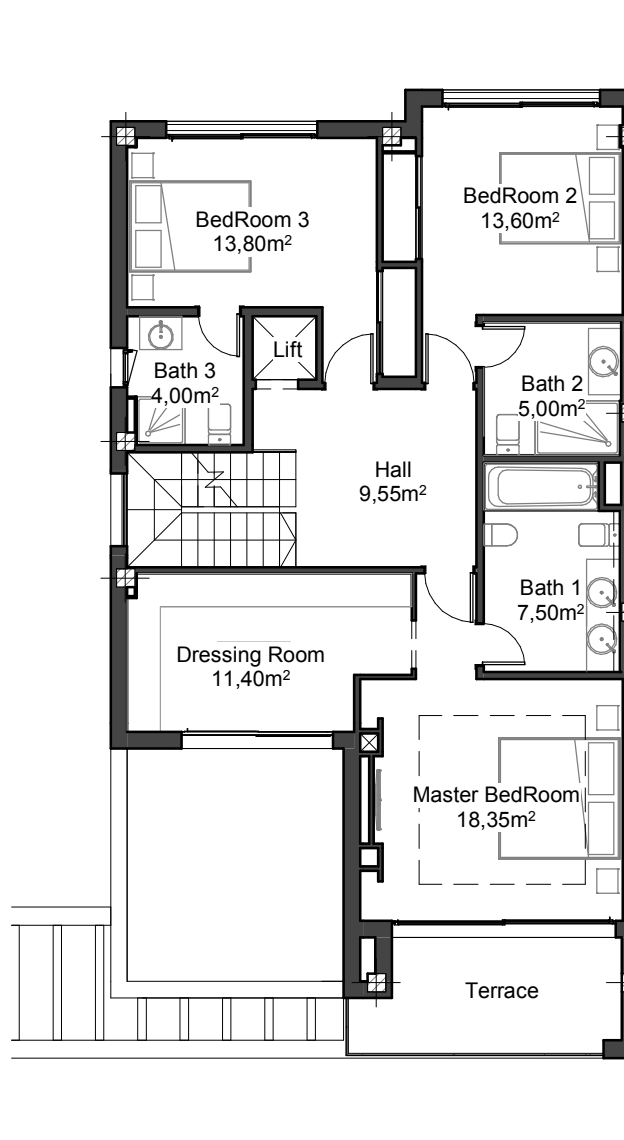
Beds	5
Baths	5

Size	Built	Terraces	Garden
Lower Ground	79.68 m ²	- m ²	- m ²
Ground Floor	103.49 m ²	76.52 m ²	49.55 m ²
First Floor	106.78 m ²	8.70 m ²	- m ²
Roof Solarium	12.60 m ²	93.38 m ²	- m ²
TOTAL	302.55 m²	178.60 m²	49.55 m²

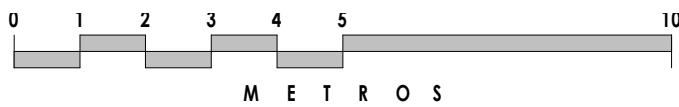


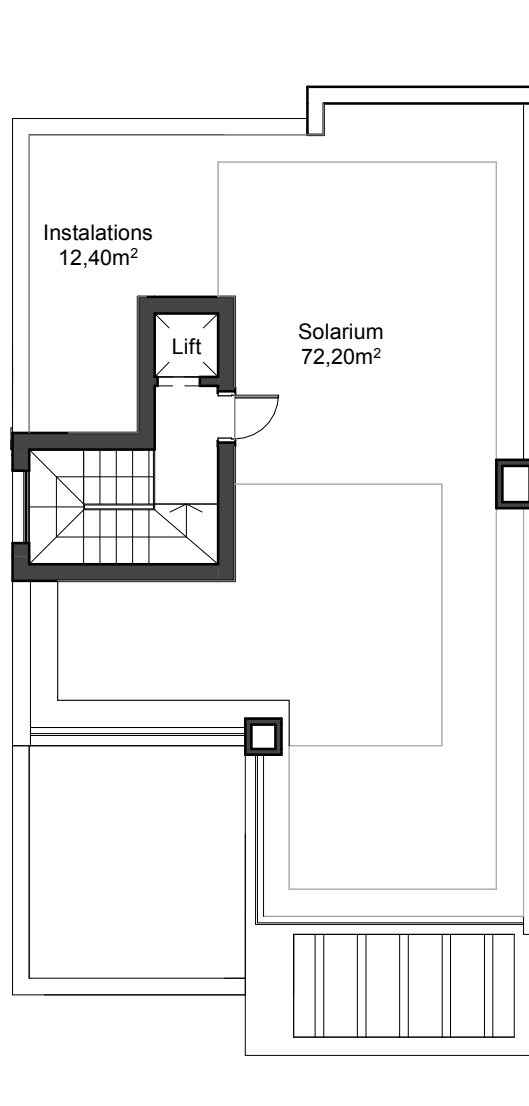
Ground Floor



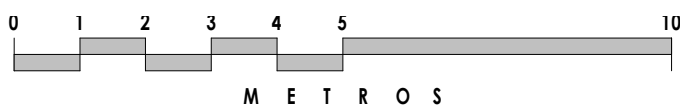


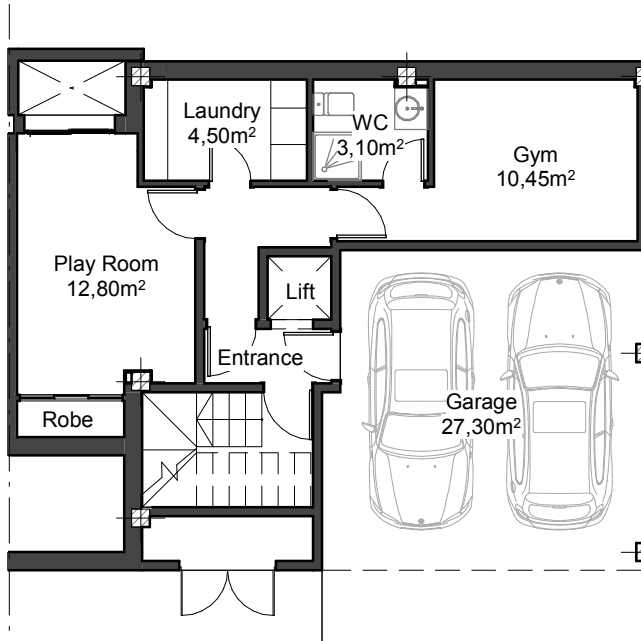
First Floor



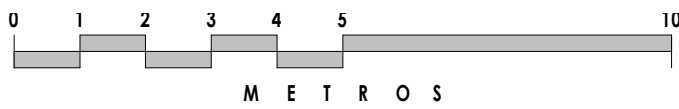


Roof Solarium





Basement Level

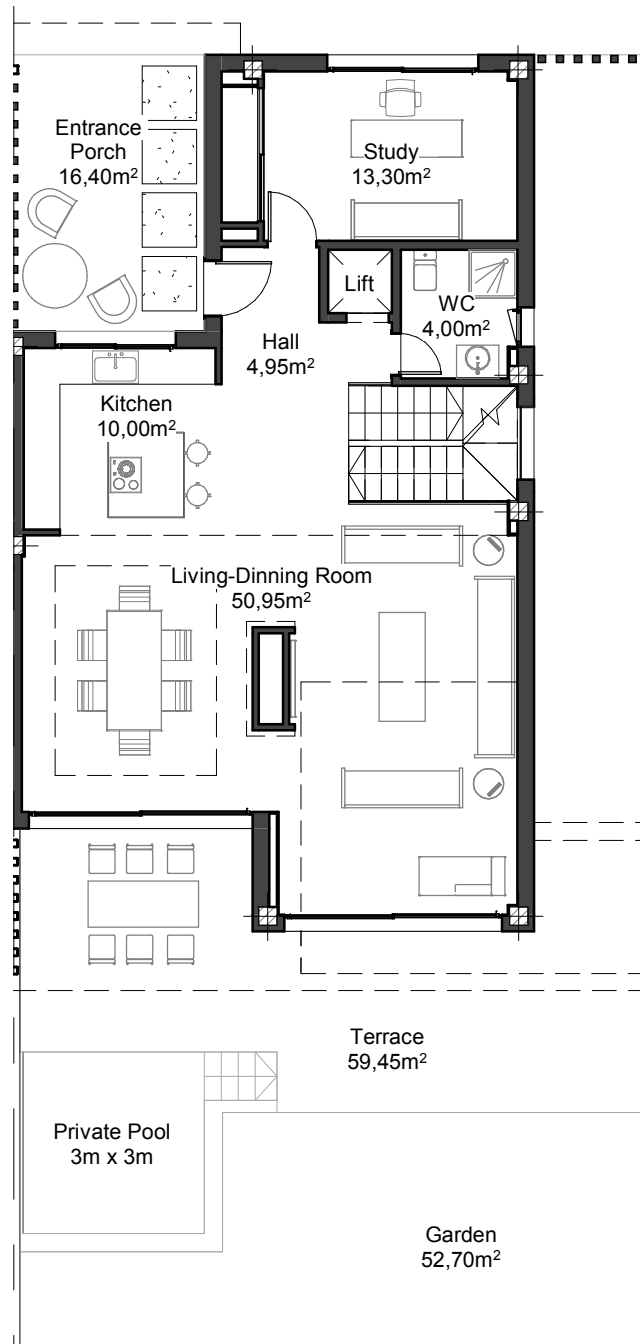


Villa 04

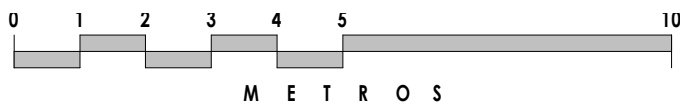
Details

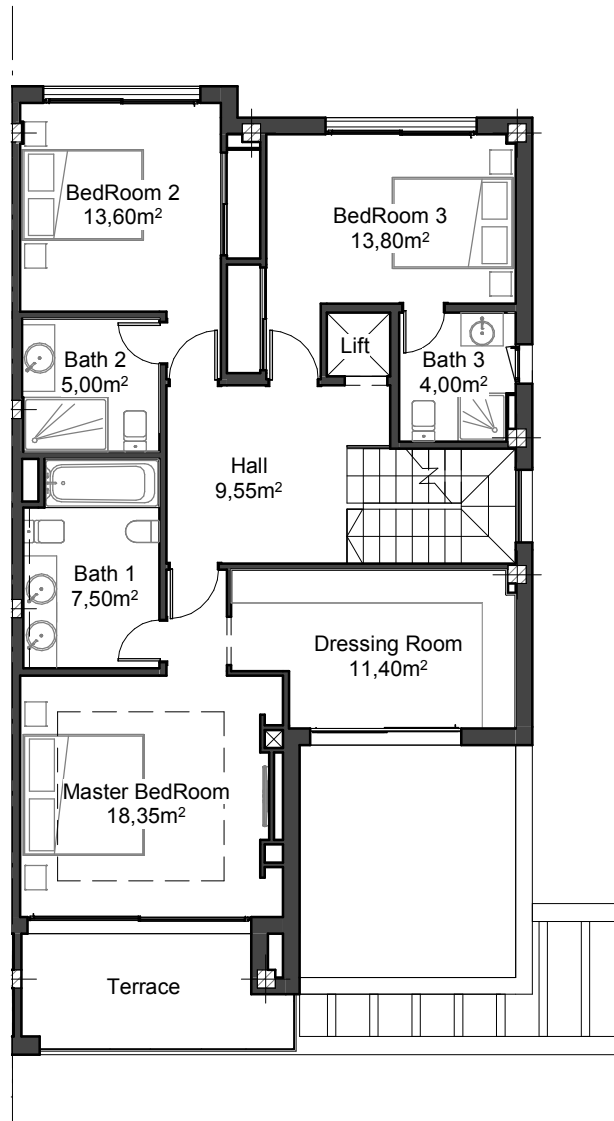
Beds	5
Baths	5

Size	Built	Terraces	Garden
Lower Ground	80.92 m ²	- m ²	- m ²
Ground Floor	103.49 m ²	78.24 m ²	54.00 m ²
First Floor	106.78 m ²	8.70 m ²	- m ²
Roof Solarium	12.60 m ²	93.38 m ²	- m ²
TOTAL	303.79 m²	180.32 m²	54.00 m²

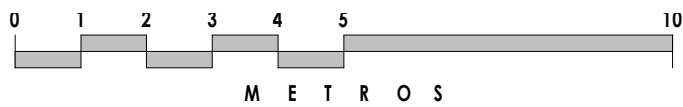


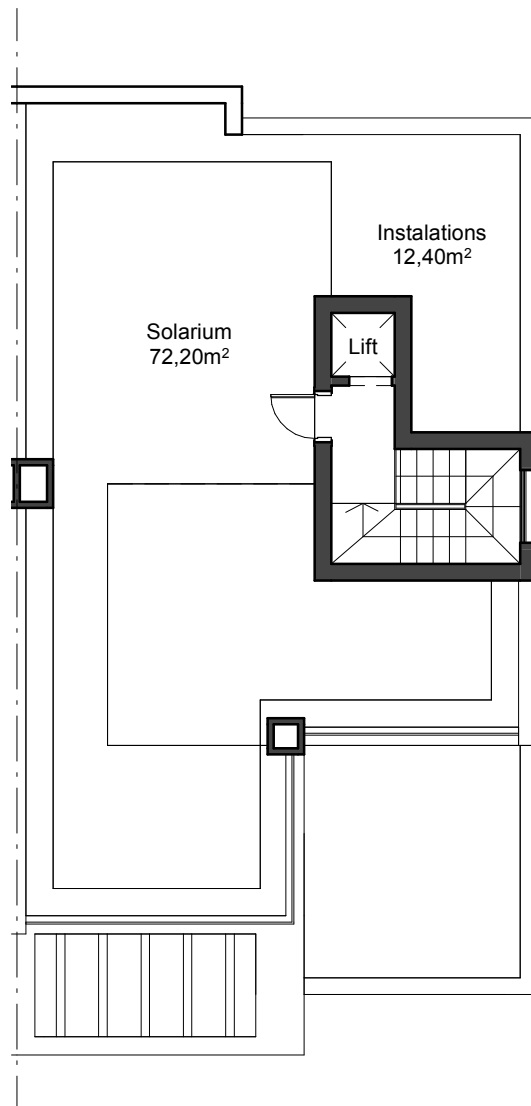
Ground Floor



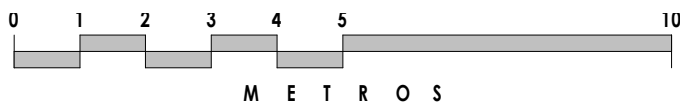


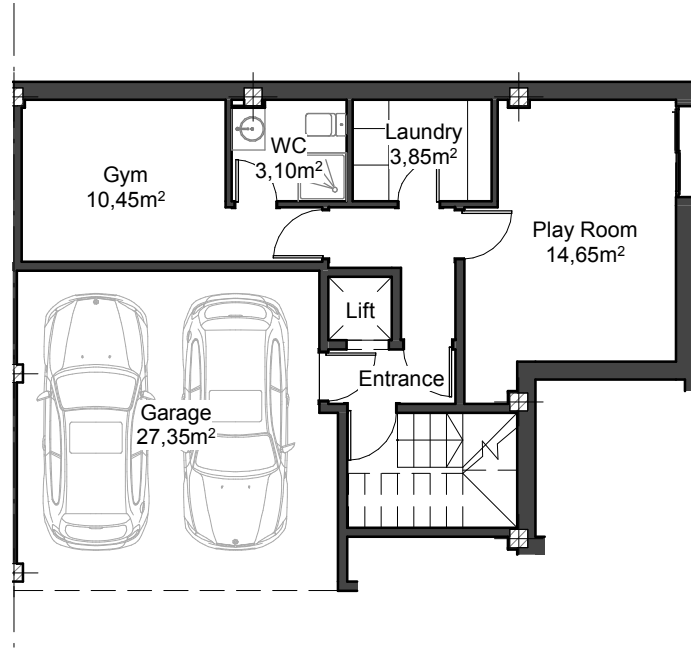
First Floor



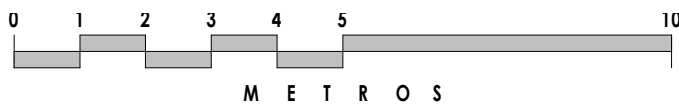


Roof Solarium





Basement Level

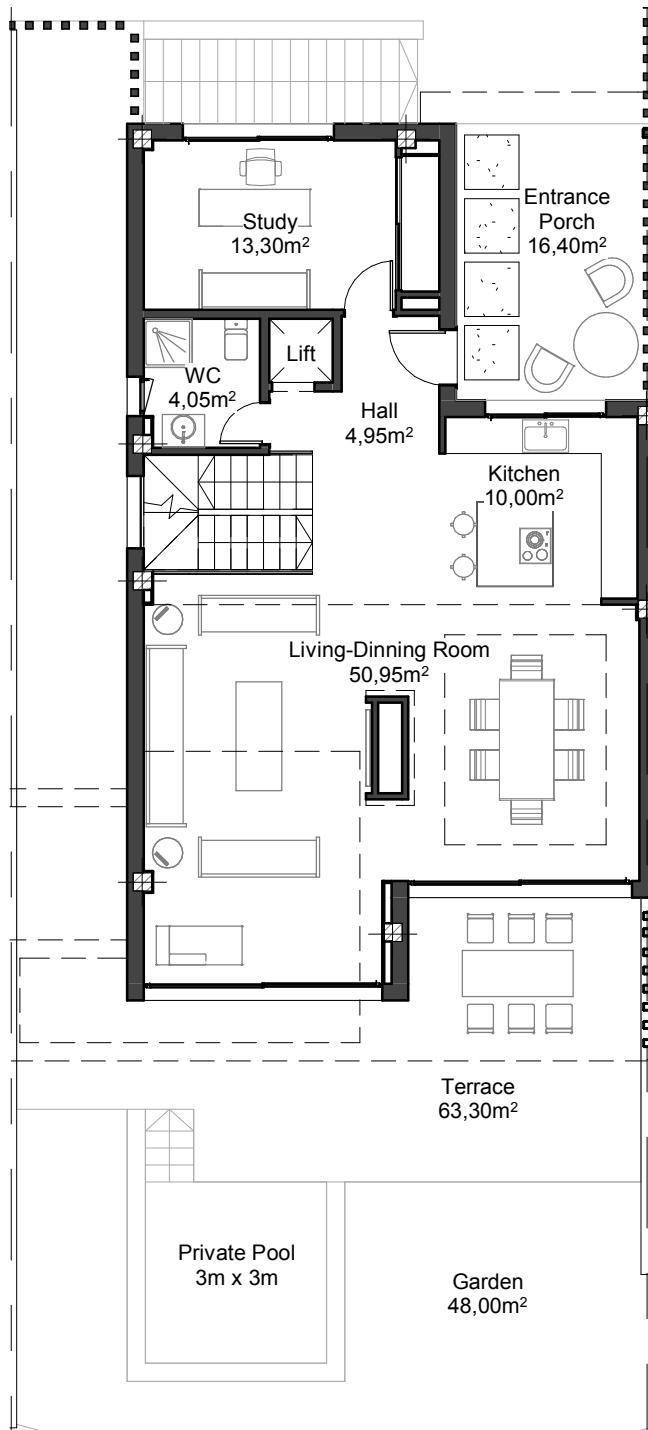


Villa 05

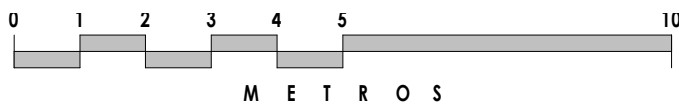
Details

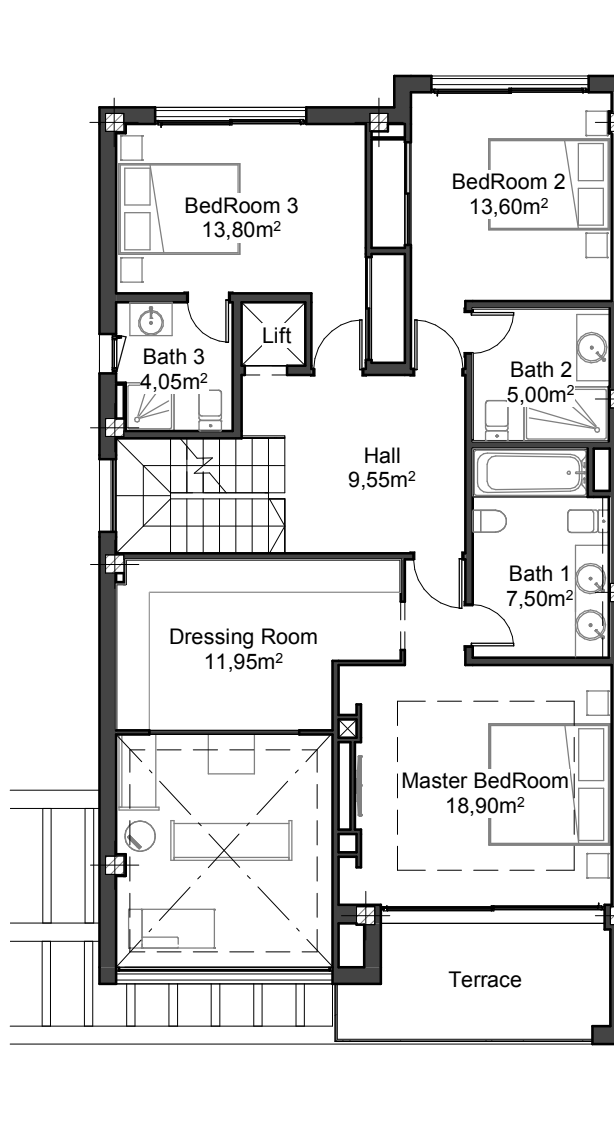
Beds	4
Baths	5

Size	Built	Terraces	Garden
Lower Ground	66.80 m ²	- m ²	- m ²
Ground Floor	103.48 m ²	82.23 m ²	48.50 m ²
First Floor	122.64 m ²	8.70 m ²	- m ²
Roof Solarium	12.60 m ²	109.74 m ²	- m ²
TOTAL	305.52 m²	200.67 m²	48.50 m²

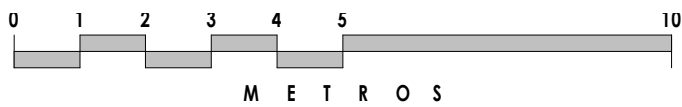


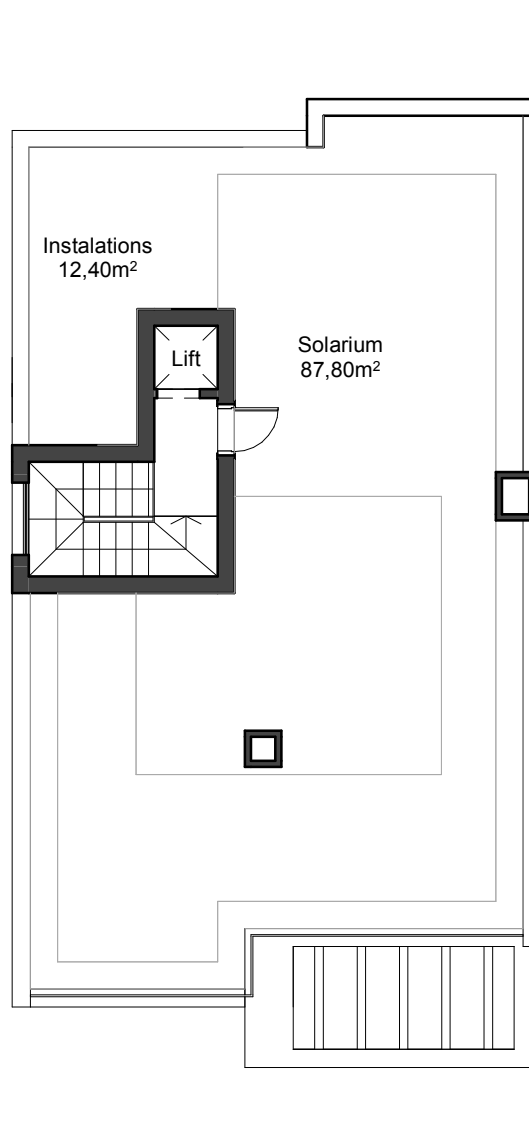
Ground Floor



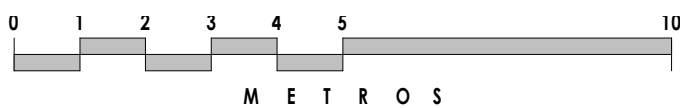


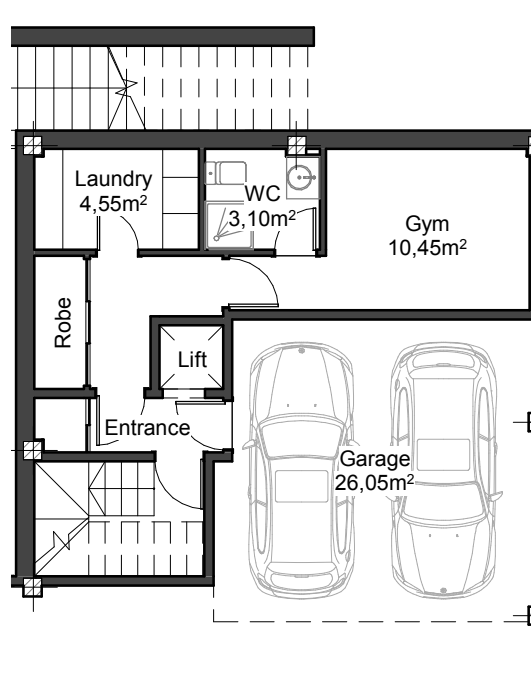
First Floor



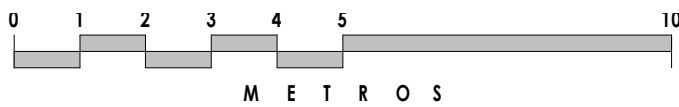


Roof Solarium





Basement Level

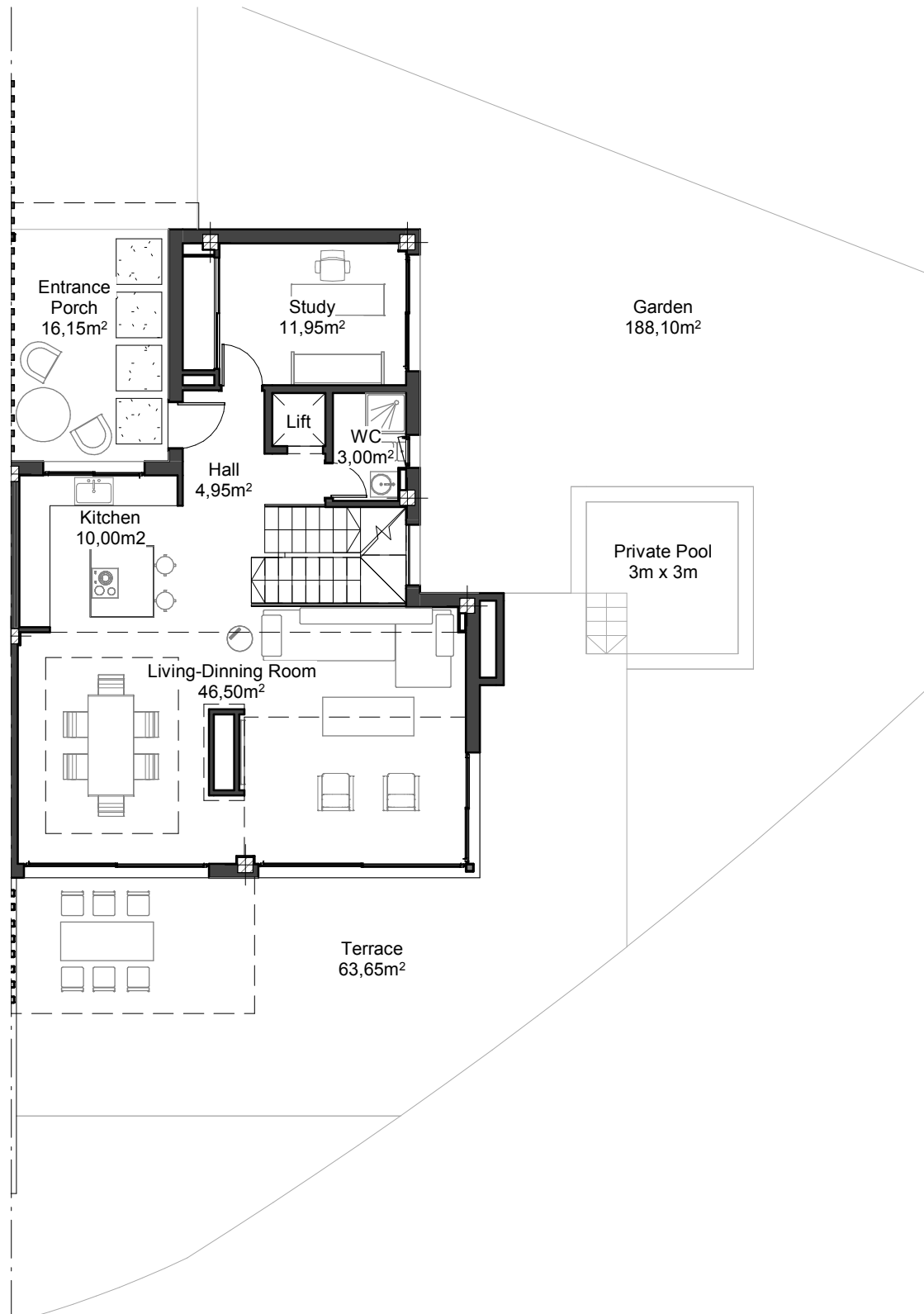


Villa 06

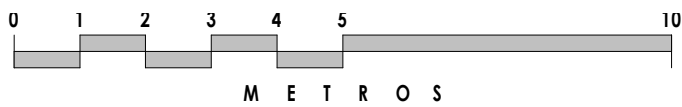
Details

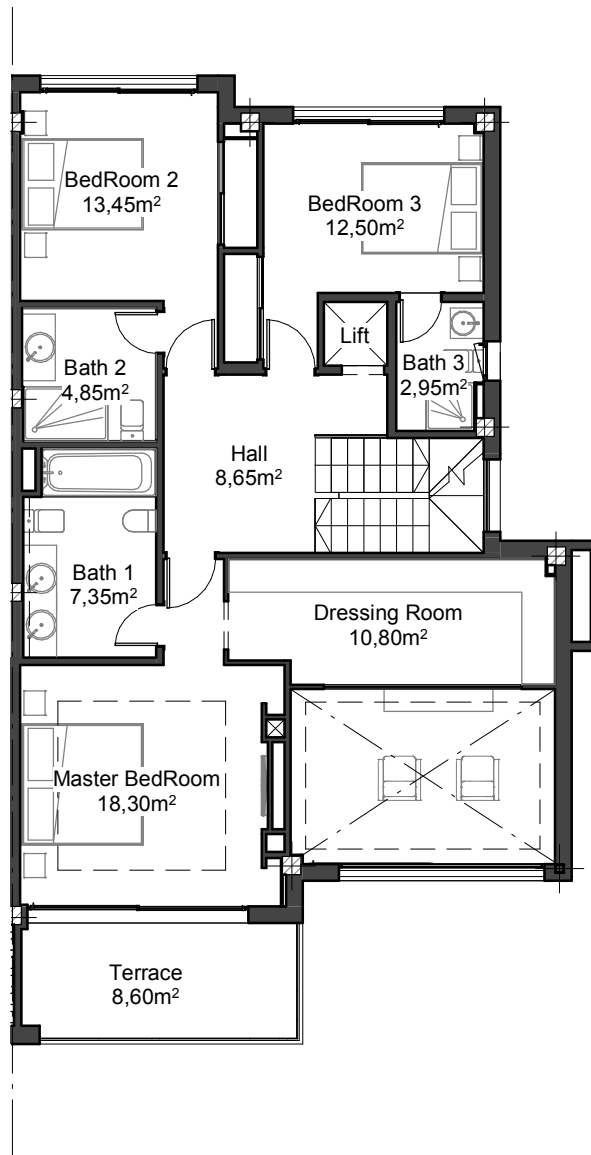
Beds	4
Baths	5

Size	Built	Terraces	Garden
Lower Ground	64.10 m ²	- m ²	- m ²
Ground Floor	95.65 m ²	80.80 m ²	169.30 m ²
First Floor	102.85 m ²	9.60 m ²	- m ²
Roof Solarium	11.45 m ²	104.10 m ²	- m ²
TOTAL	274.05 m²	194.50 m²	169.30 m²

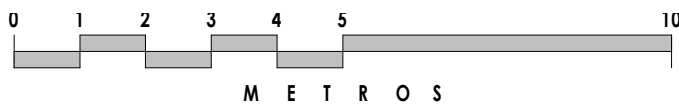


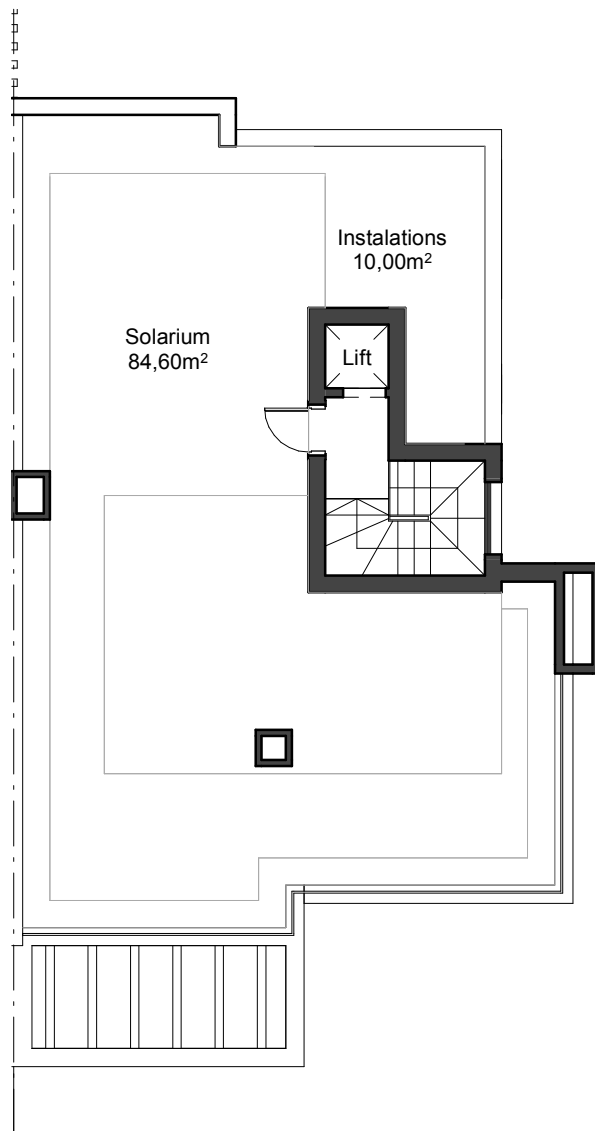
Ground Floor



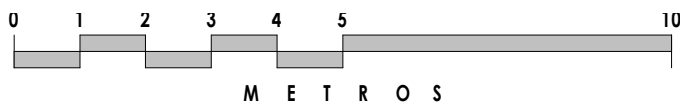


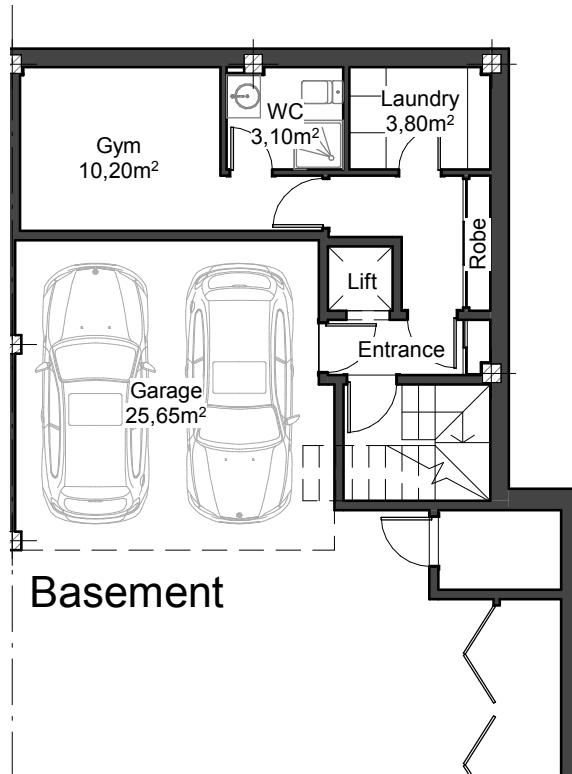
First Floor





Roof Solarium





Basement Level

