

THE ISLAND

BY OSIM
INVERSIONES

The Perfect Corner



HOUSE NUMBER 1

This corner unit stands out for its incredible amount of light. A 6-metre-high window in the living room overlooking the private garden provides an amazing backdrop view of the Estepona mountain range. It has the advantage of only having neighbours on one side and having an extra-large garden surrounding the property on the other. All three bedrooms are located on the first floor. The main bedroom is ensuite, while the remaining share the other bathroom which comes in handy when using the solarium, barbecue area and jacuzzi, the perfect venue for summer drinks. The private garage is located in the basement level together with a very large area for laundry room or many other different uses.



First Line Beach



Top Specifications



Olympic pool
(50m)



Unique Project



Gym



SPA

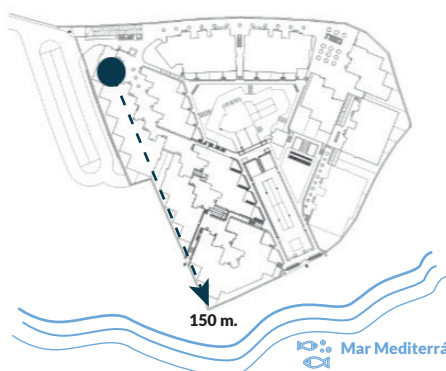
CONSTRUCTED: 245.55 sqm / EXTERNAL: 231 sqm

PARKING
STORAGE

GROUND FLOOR

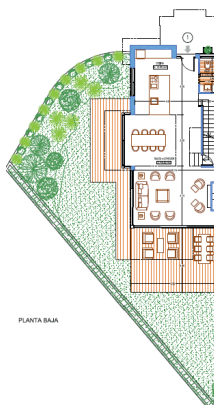
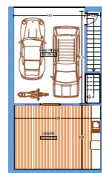
FIRST FLOOR

SOLARIUM



150 m.

Mar Mediterráneo



PLANTA BAJA

