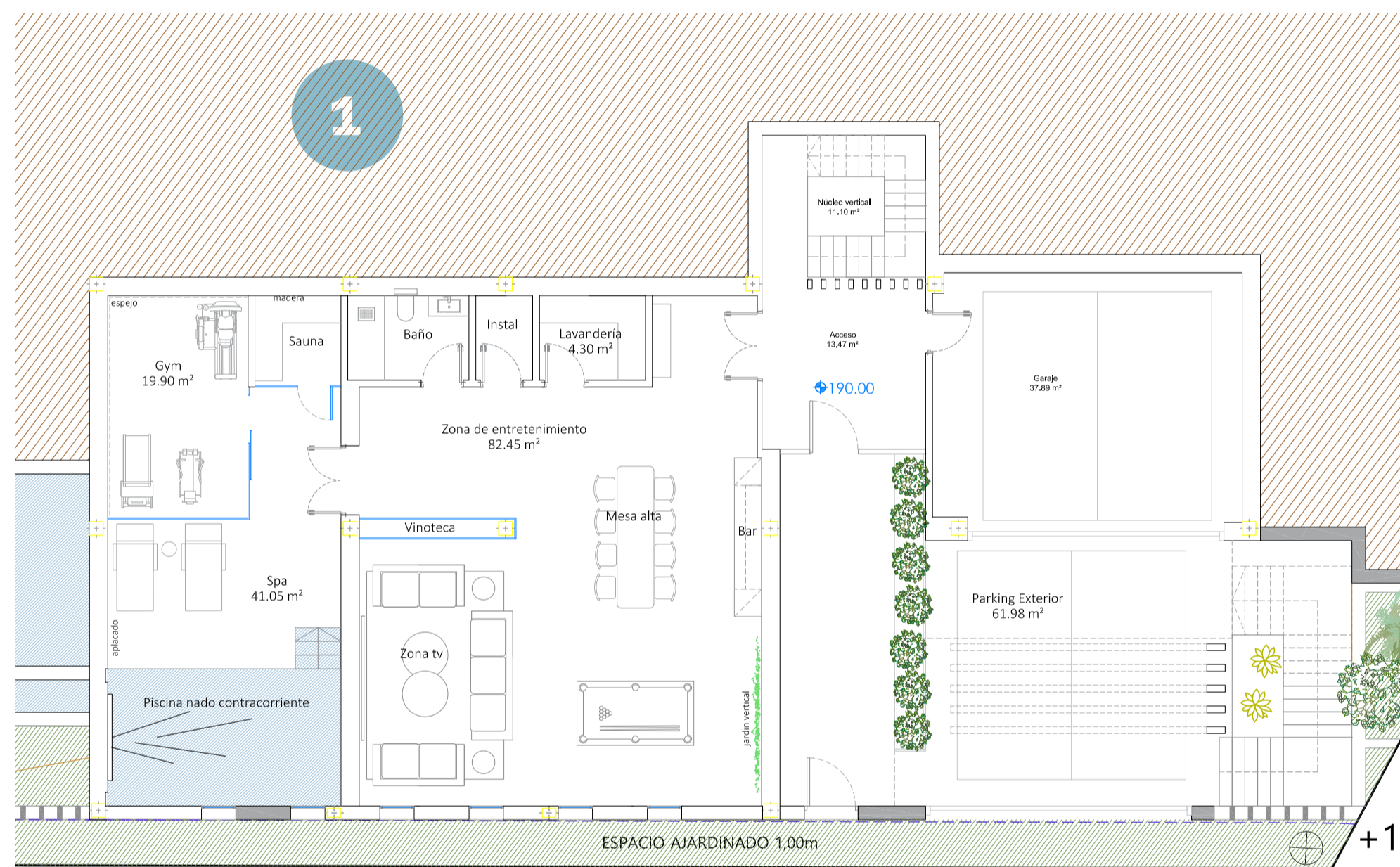


5. PLANS VILLA TYPE DOWN

TOTAL LIVING AREA: 585,04 m²

TOTAL TERRACES: 373,15 m²

TOTAL INCLUDING TERRACES: 1033,19 m²

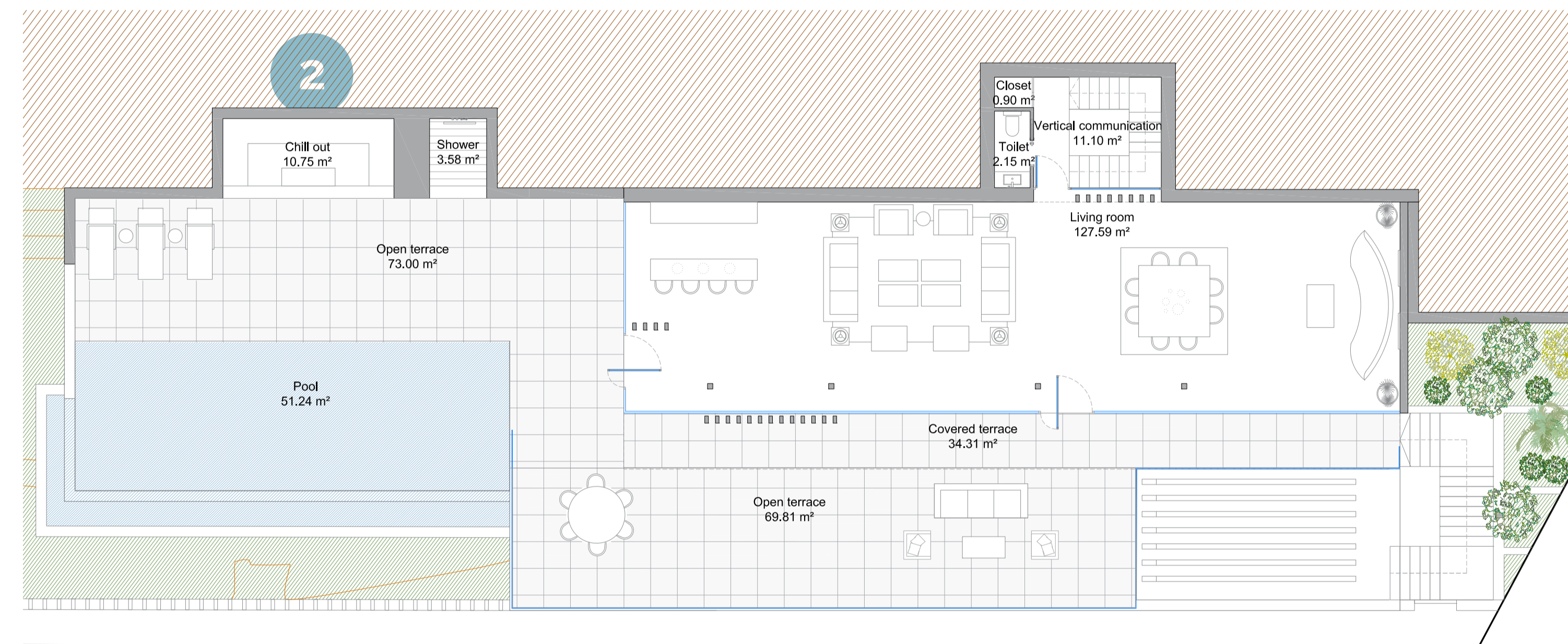


1

Basement

261,75 m²
Living Area

75 m²
Parking



2

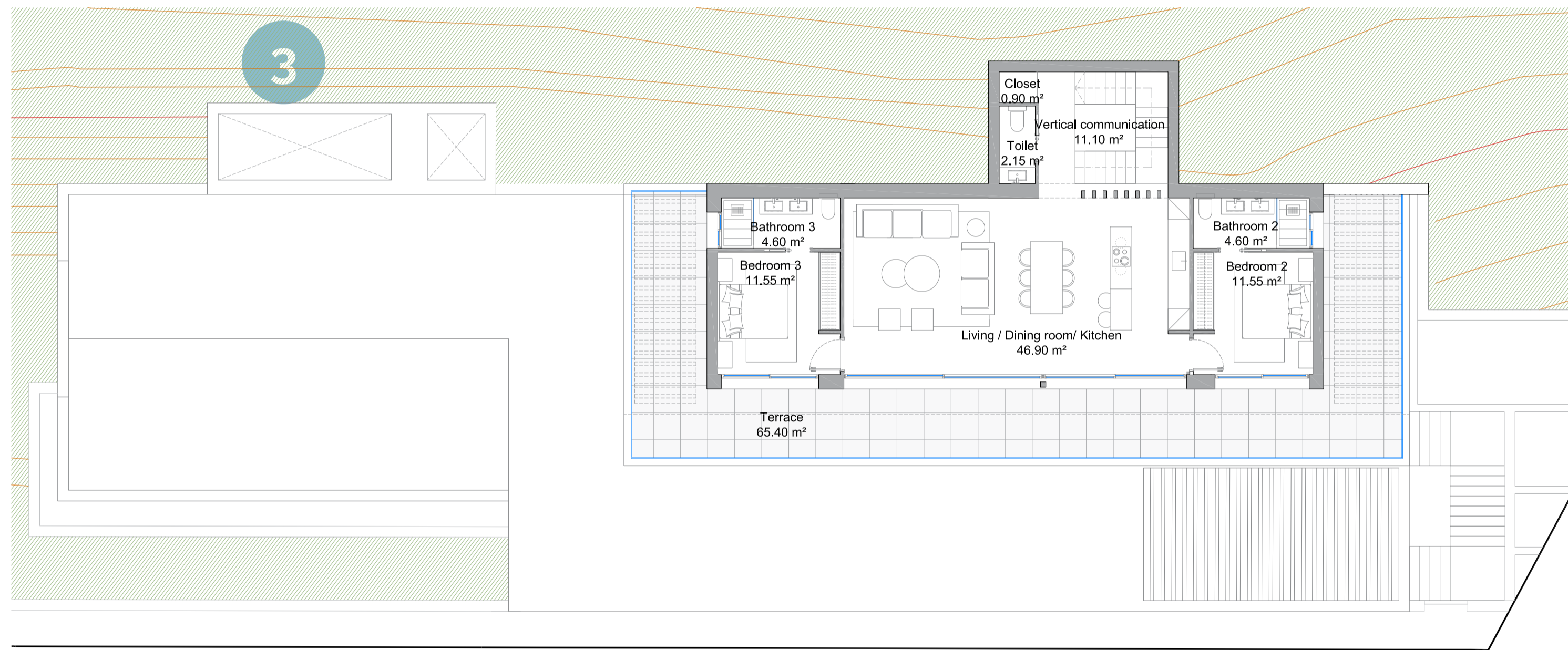
Ground Floor

149,23 m²
Living Area

51,24 m²
Swimming Pool

196,19 m²
Terraces

5. PLANS VILLA TYPE DOWN

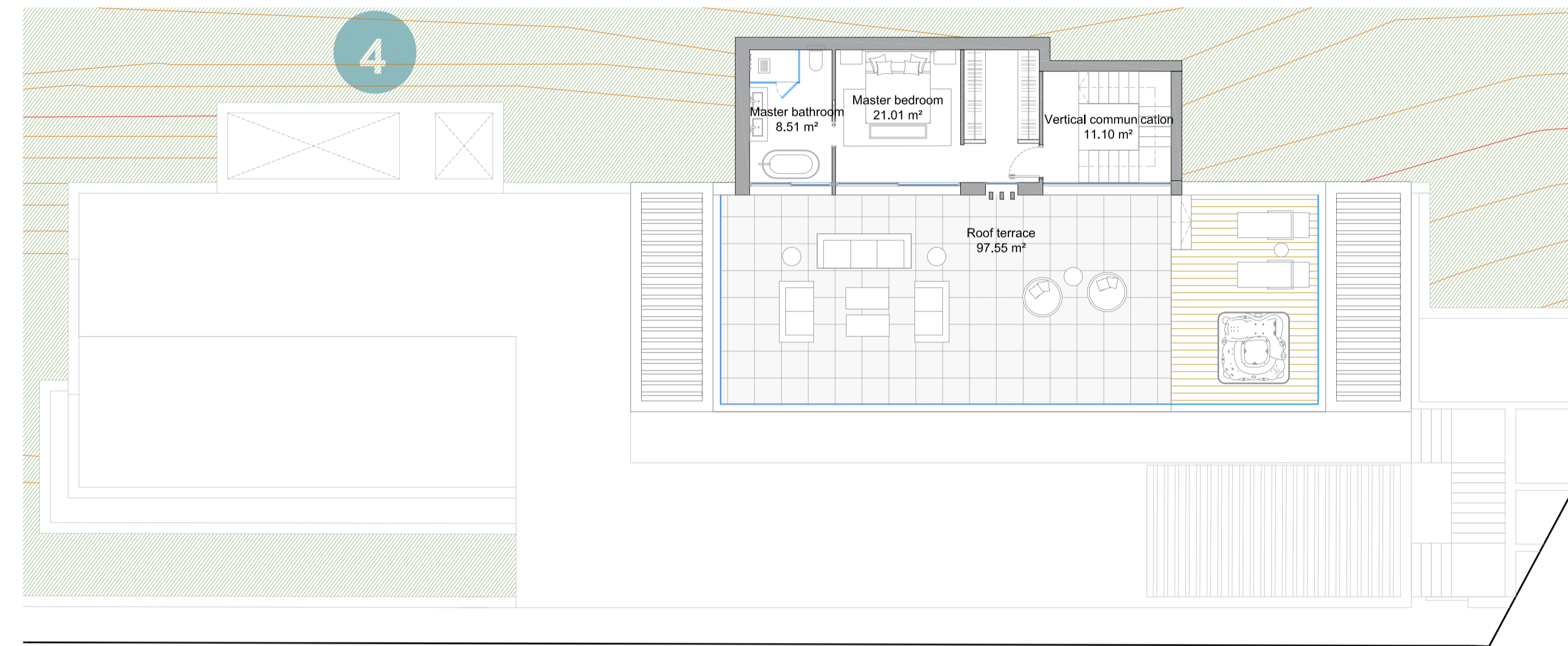


3

First floor

120,11 m²
Living Area

69,64 m²
Terraces



4

Second Floor

53,95 m²
Living Area

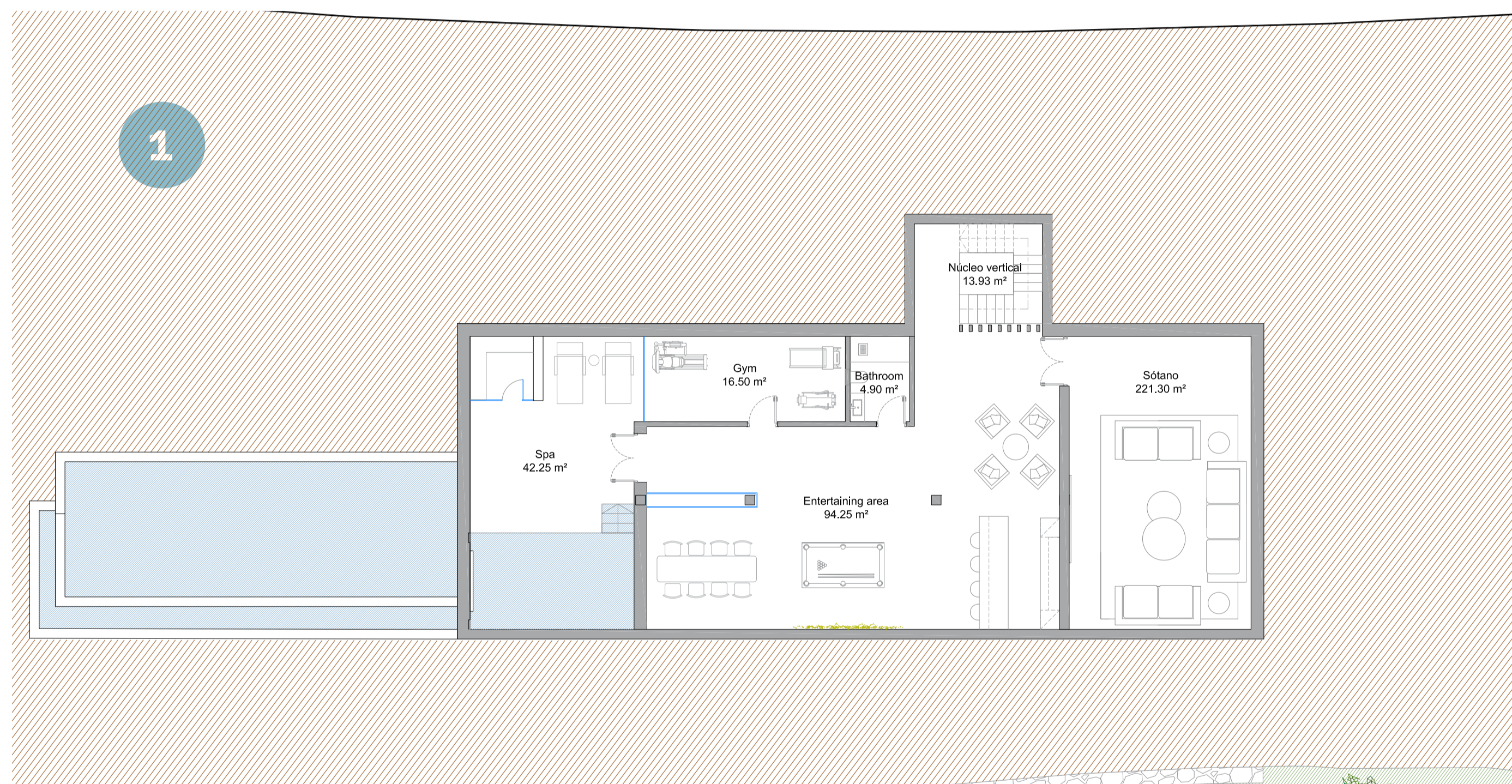
107,32 m²
Terraces

5. PLANS VILLA TYPE UP

TOTAL LIVING AREA: 579,43 m²

TOTAL TERRACES: 339,57 m²

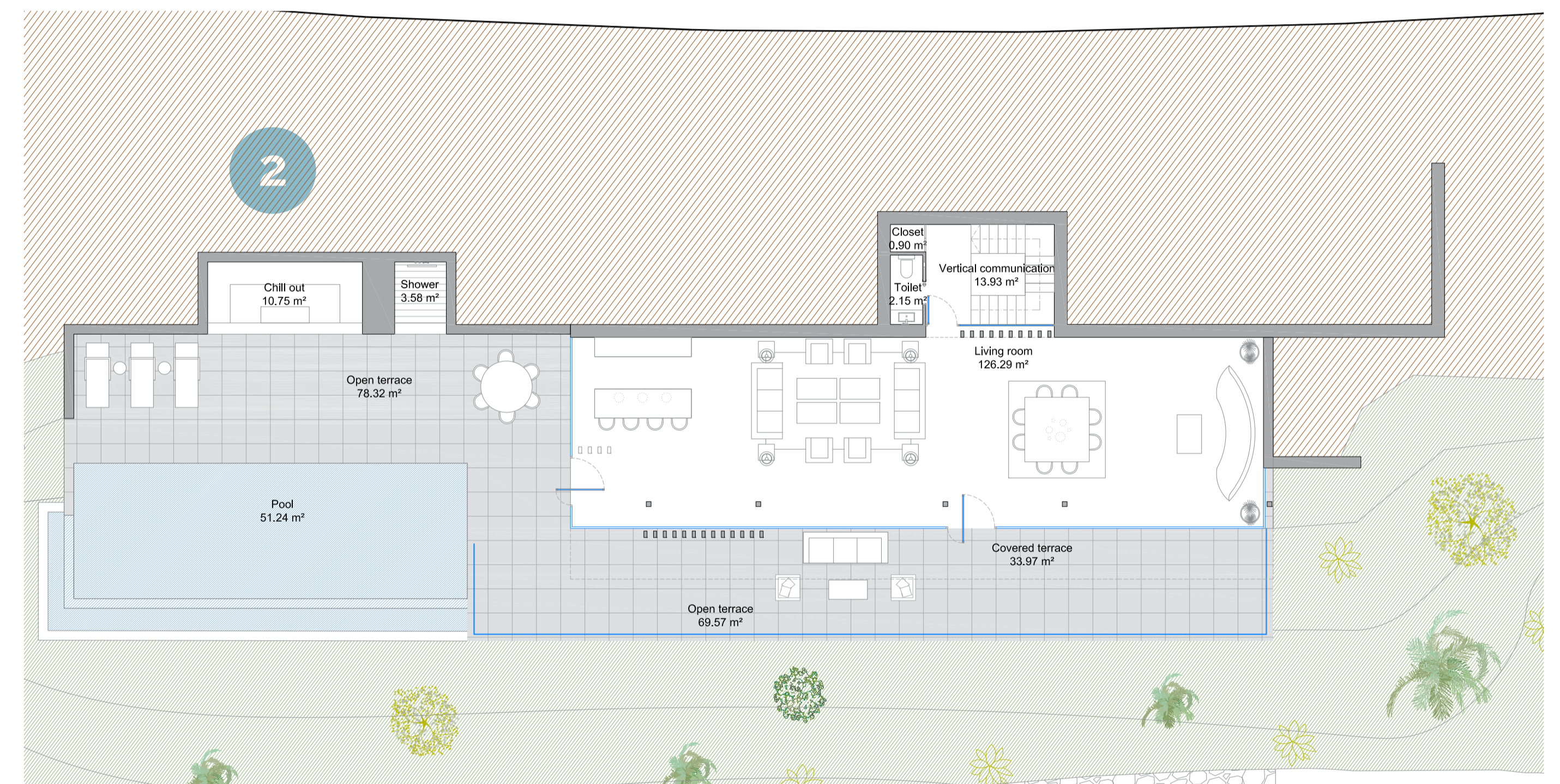
TOTAL INCLUDING TERRACES: 980,98 m²



1

Basement

257,56 m²
Living Area



2

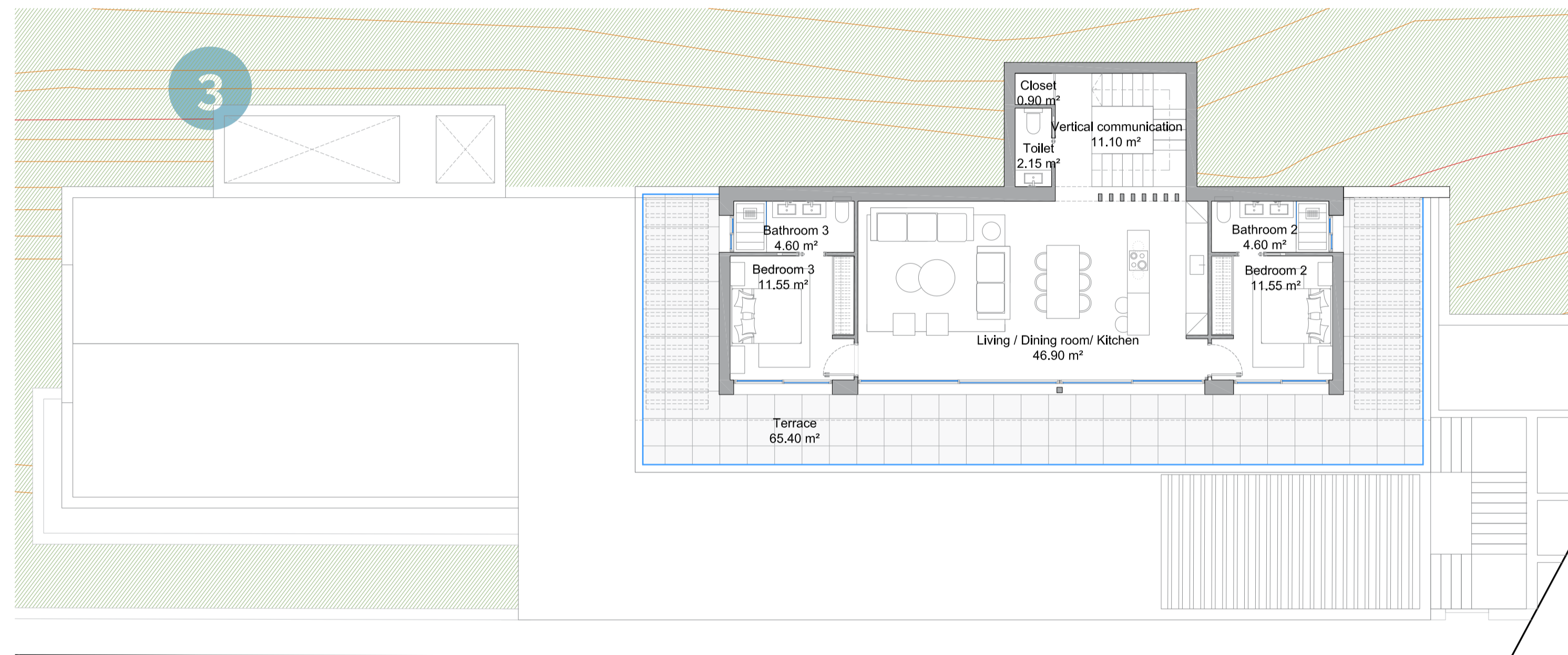
Ground Floor

149,58 m²
Living Area

51,24 m²
Swimming Pool

177,12 m²
Terraces

5. PLANS VILLA TYPE UP

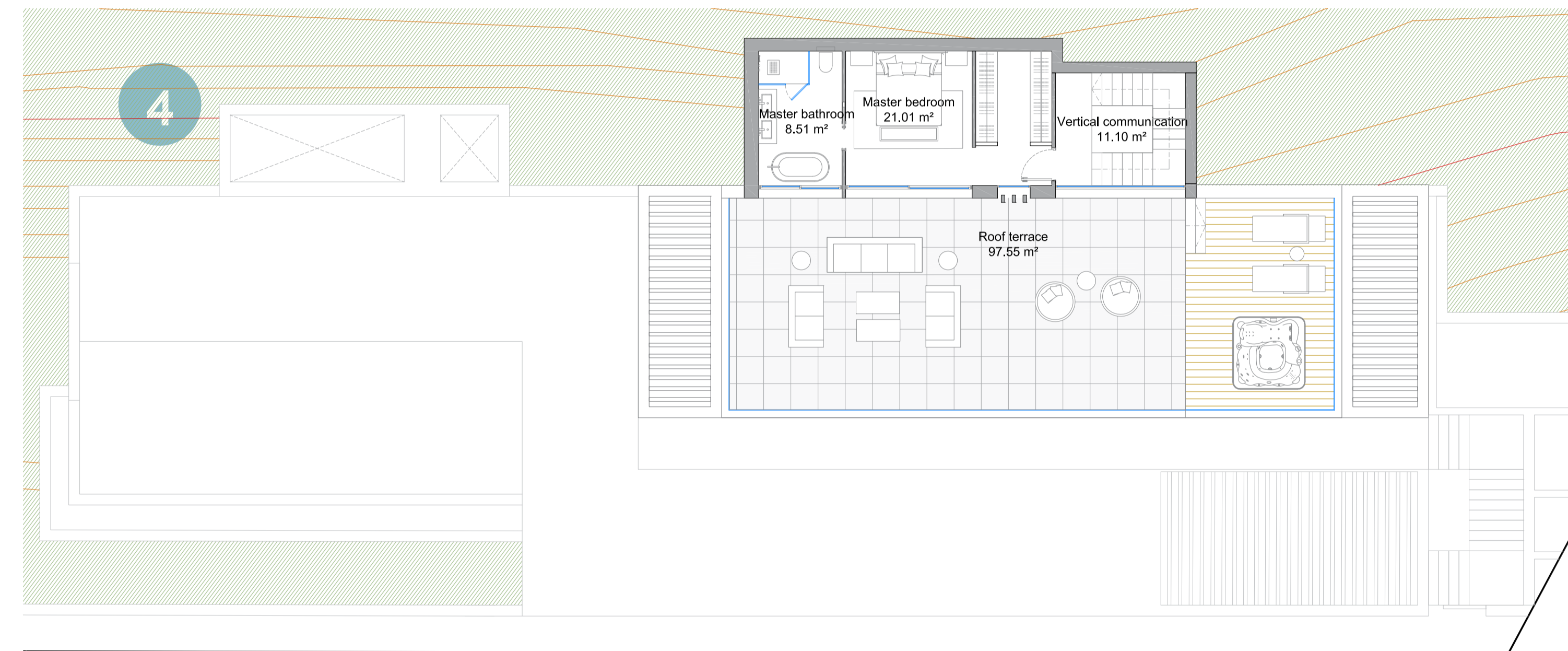


3

First Floor

117,38 m²
Living Area

65,4 m²
Terraces



4

Second Floor

54,91 m²
Living Area

97,05 m²
Terraces

61,98 m²
Parking