



# WEST BEACH

*"A Cosmopolitan Lifestyle  
by the Sea..."*





“

Unique Boutique Development composed of only 6 Houses. Contemporary Design & Architecture with luxury quality specifications in a stunning beachside location. Communal swimming pool, private garden, 2 parking spaces and store-room.



“

West Beach is located just 5 minutes drive to Estepona city centre, 20 minutes drive to Marbella, 45 minutes to Málaga International Airport and 25 minutes to Gibraltar.





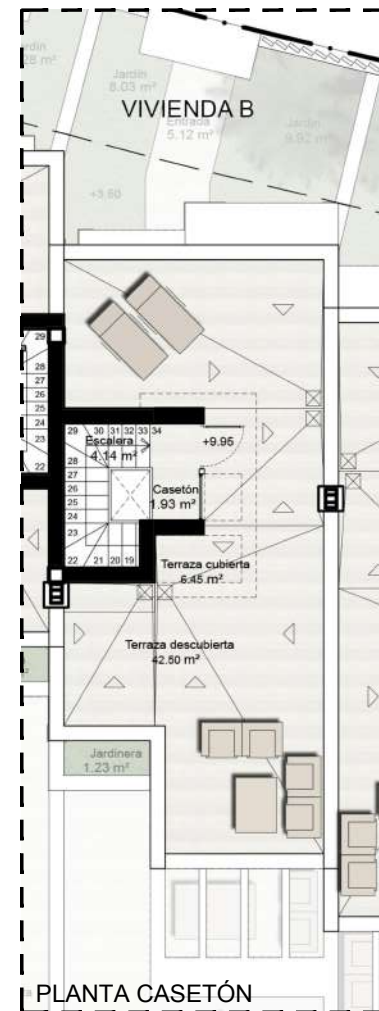
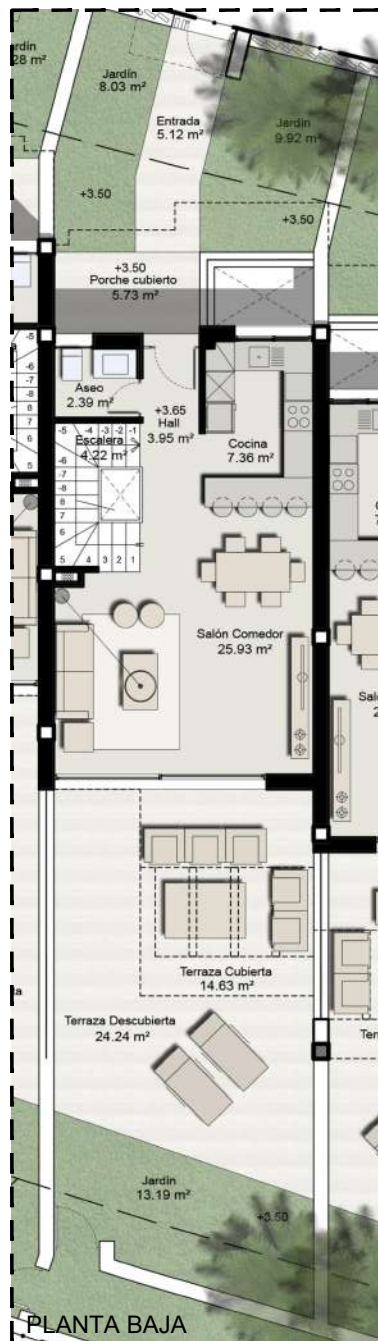
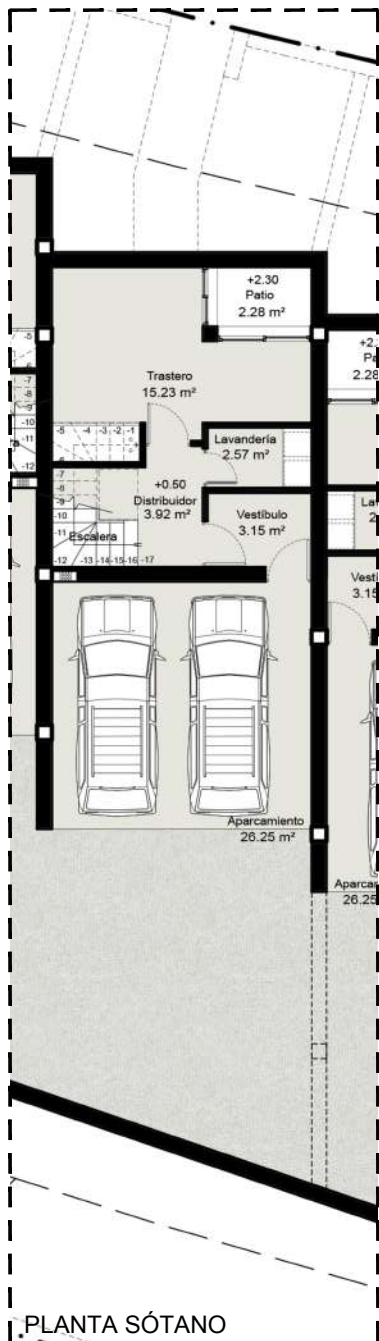
“

Total built areas from 290 to 317 m2. All the houses have 3 bedrooms, 2 complete bathrooms + 1 guest toilet, open plan modern kitchen, big living room and private garden, 2 car underground garage & large store-room and solarium with nice views.









RESUMEN DE SUPERFICIES			
VIVIENDA B			
SUP.CERRADA-ABIERTA	Sup.Útil m²	S.Const.Real m²	S.Computable m²
TOTAL SUP.CERRADA	151,78 m²	178,38 m²	116,41 m²
TOTAL SUP.ABIERTA	138,12 m²	36,38 m²	7,19 m²
TOTAL SUP.VIVIENDA	289,90 m²	214,76 m²	123,60 m²
SUP. SEGÚN RASANTE			
SUP. SEGÚN RASANTE	Sup.Útil m²	S.Const.Real m²	S.Computable m²
TOTAL SUP.SOBRE RASANTE	236,50 m²	149,52 m²	123,60 m²
TOTAL SUP.BAJO RASANTE	53,40 m²	65,24 m²	0,00 m²
TOTAL SUP.VIVIENDA	289,90 m²	214,76 m²	123,60 m²
SUP. SEGÚN USOS			
SUP. SEGÚN USOS	Sup.Útil m²	S.Const.Real m²	S.Computable m²
VIVIENDA	236,50 m²	149,52 m²	123,60 m²
GARAJE	26,25 m²	28,86 m²	0,00 m²
TRAST-L.SERVICIO SÓT	27,15 m²	36,38 m²	0,00 m²
TOTAL SUP.VIVIENDA	289,90 m²	214,76 m²	123,60 m²



“

50 metres from one of the best beaches in the area, Playa Guadalobón...



